

## Product datasheet for **TA316114**

### **Nkx2.6 (NKX2-6) Rabbit Polyclonal Antibody**

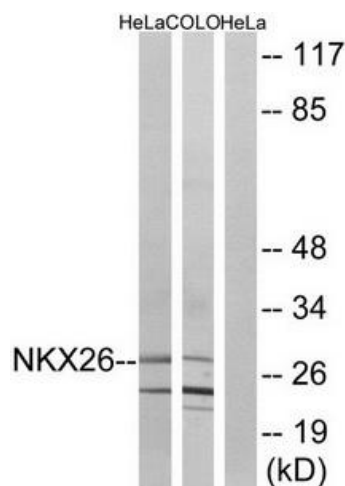
#### **Product data:**

Product Type:	Primary Antibodies
Applications:	WB
Recommended Dilution:	WB: 1:500~1:3000, ELISA: 1:40000
Reactivity:	Human
Host:	Rabbit
Isotype:	IgG
Clonality:	Polyclonal
Immunogen:	The antiserum was produced against synthesized peptide derived from internal of human NKX26.
Formulation:	Phosphate buffered saline (without Mg <sup>2+</sup> and Ca <sup>2+</sup> ), pH 7.4, 150mM NaCl, 0.02% sodium azide and 50% glycerol.
Concentration:	lot specific
Purification:	The antibody was affinity-purified from rabbit antiserum by affinity-chromatography using epitope-specific immunogen.
Conjugation:	Unconjugated
Storage:	Store at -20°C as received.
Stability:	Stable for 12 months from date of receipt.
Gene Name:	NK2 homeobox 6
Database Link:	<a href="#">NP_001129743</a> <a href="#">Entrez Gene 137814 Human</a> <a href="#">A6NCS4</a>
Synonyms:	CSX2; CTHM; NKX2F; NKX4-2
Note:	NKX26 antibody detects endogenous levels of total NKX26 protein.



[View online »](#)

## Product images:



Western blot analysis of extracts from HeLa cells and COLO cells, using NKX26 antibody. The lane on the right is treated with the synthesized peptide.