

## Product datasheet for **TA316111**

### OR9A2 Rabbit Polyclonal Antibody

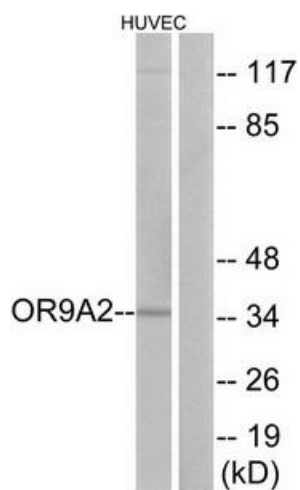
#### Product data:

Product Type:	Primary Antibodies
Applications:	WB
Recommended Dilution:	WB: 1:500~1:3000, ELISA: 1:20000
Reactivity:	Human
Host:	Rabbit
Isotype:	IgG
Clonality:	Polyclonal
Immunogen:	The antiserum was produced against synthesized peptide derived from internal of human OR9A2.
Formulation:	Phosphate buffered saline (without Mg <sup>2+</sup> and Ca <sup>2+</sup> ), pH 7.4, 150mM NaCl, 0.02% sodium azide and 50% glycerol.
Concentration:	lot specific
Purification:	The antibody was affinity-purified from rabbit antiserum by affinity-chromatography using epitope-specific immunogen.
Conjugation:	Unconjugated
Storage:	Store at -20°C as received.
Stability:	Stable for 12 months from date of receipt.
Gene Name:	olfactory receptor family 9 subfamily A member 2
Database Link:	<a href="#">NP_001001658</a> <a href="#">Entrez Gene 135924 Human</a> <a href="#">Q8NGT5</a>
Synonyms:	family 9; member 2; olfactory receptor; olfactory receptor OR7-2; subfamily A
Note:	OR9A2 antibody detects endogenous levels of total OR9A2 protein.
Protein Families:	Transmembrane
Protein Pathways:	Olfactory transduction



[View online »](#)

## Product images:



Western blot analysis of extracts from HUVEC cells, using OR9A2 antibody. The lane on the right is treated with the synthesized peptide.