

Product datasheet for **TA316108**

GPCR 2037 (GPR151) Rabbit Polyclonal Antibody

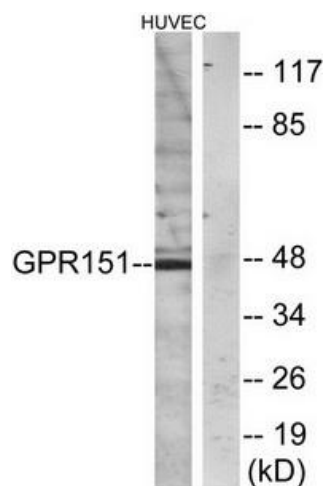
Product data:

Product Type:	Primary Antibodies
Applications:	IF, WB
Recommended Dilution:	WB: 1:500~1:3000, IF: 1:100~1:500, ELISA: 1:20000
Reactivity:	Human
Host:	Rabbit
Isotype:	IgG
Clonality:	Polyclonal
Immunogen:	The antiserum was produced against synthesized peptide derived from C-terminal of human GPR151.
Formulation:	Phosphate buffered saline (without Mg ²⁺ and Ca ²⁺), pH 7.4, 150mM NaCl, 0.02% sodium azide and 50% glycerol.
Concentration:	lot specific
Purification:	The antibody was affinity-purified from rabbit antiserum by affinity-chromatography using epitope-specific immunogen.
Conjugation:	Unconjugated
Storage:	Store at -20°C as received.
Stability:	Stable for 12 months from date of receipt.
Gene Name:	G protein-coupled receptor 151
Database Link:	NP_919227 Entrez Gene 134391 Human Q8TDV0
Synonyms:	GALR4; GALRL; GPCR; PGR7
Note:	GPR151 antibody detects endogenous levels of total GPR151 protein.
Protein Families:	Druggable Genome, Transmembrane

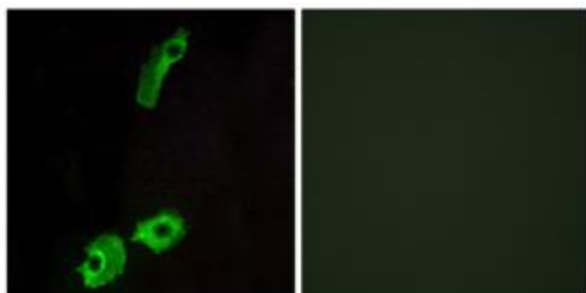


[View online »](#)

Product images:



Western blot analysis of extracts from HUVEC cells, using GPR151 antibody. The lane on the right is treated with the synthesized peptide.



Immunofluorescence analysis of HeLa cells, using GPR151 antibody. The picture on the right is treated with the synthesized peptide.