

## Product datasheet for **TA316105**

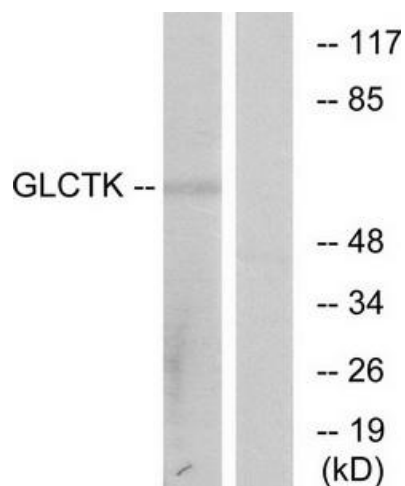
### GLYCTK Rabbit Polyclonal Antibody

#### Product data:

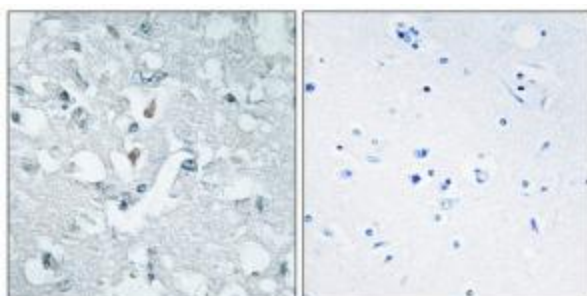
Product Type:	Primary Antibodies
Applications:	IF, IHC, WB
Recommended Dilution:	WB: 1:500~1:3000, IHC: 1:50~1:100, IF: 1:100~1:500, ELISA: 1:20000
Reactivity:	Human, Mouse, Rat
Host:	Rabbit
Isotype:	IgG
Clonality:	Polyclonal
Immunogen:	The antiserum was produced against synthesized peptide derived from internal of human GLCTK.
Formulation:	Phosphate buffered saline (without Mg <sup>2+</sup> and Ca <sup>2+</sup> ), pH 7.4, 150mM NaCl, 0.02% sodium azide and 50% glycerol.
Concentration:	lot specific
Purification:	The antibody was affinity-purified from rabbit antiserum by affinity-chromatography using epitope-specific immunogen.
Conjugation:	Unconjugated
Storage:	Store at -20°C as received.
Stability:	Stable for 12 months from date of receipt.
Gene Name:	glycerate kinase
Database Link:	<a href="#">NP_001138423</a> <a href="#">Entrez Gene 235582</a> <a href="#">MouseEntrez Gene 684314</a> <a href="#">RatEntrez Gene 132158</a> <a href="#">Human Q8IVS8</a>
Synonyms:	HBeAgBP4A; HBEBP2; HBEBP4
Note:	GLCTK antibody detects endogenous levels of total GLCTK protein.
Protein Families:	Transcription Factors
Protein Pathways:	Glycerolipid metabolism, Glycine, serine and threonine metabolism, Glyoxylate and dicarboxylate metabolism, Metabolic pathways



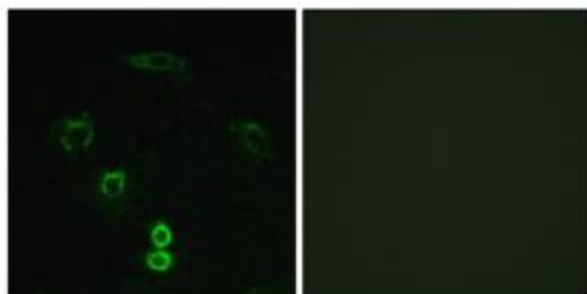
[View online »](#)

**Product images:**

Western blot analysis of extracts from 3T3 cells, using GLCTK antibody. The lane on the right is treated with the synthesized peptide.



Immunohistochemistry analysis of paraffin-embedded human brain tissue using GLCTK antibody. The picture on the right is treated with the synthesized peptide.



Immunofluorescence analysis of A549 cells, using GLCTK antibody. The picture on the right is treated with the synthesized peptide.