

Product datasheet for **TA316099**

FAM3D Rabbit Polyclonal Antibody

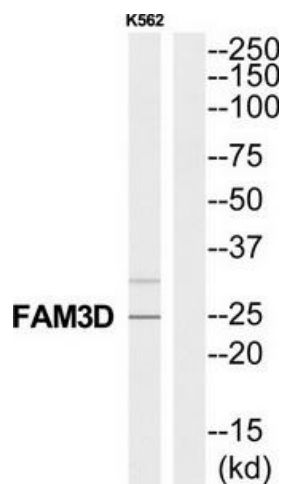
Product data:

Product Type:	Primary Antibodies
Applications:	WB
Recommended Dilution:	WB: 1:500~1:3000, ELISA: 1:40000
Reactivity:	Human
Host:	Rabbit
Isotype:	IgG
Clonality:	Polyclonal
Immunogen:	The antiserum was produced against synthesized peptide derived from C-terminal of human FAM3D.
Formulation:	Phosphate buffered saline (without Mg ²⁺ and Ca ²⁺), pH 7.4, 150mM NaCl, 0.02% sodium azide and 50% glycerol.
Concentration:	lot specific
Purification:	The antibody was affinity-purified from rabbit antiserum by affinity-chromatography using epitope-specific immunogen.
Conjugation:	Unconjugated
Storage:	Store at -20°C as received.
Stability:	Stable for 12 months from date of receipt.
Gene Name:	family with sequence similarity 3 member D
Database Link:	NP_620160 Entrez Gene 131177 Human Q96BQ1
Synonyms:	EF7; OIT1
Note:	FAM3D antibody detects endogenous levels of total FAM3Dprotein.
Protein Families:	Secreted Protein, Transmembrane



[View online »](#)

Product images:



Western blot analysis of extracts from K562 cells, using FAM3D antibody. The lane on the right is treated with the synthesized peptide.