

Product datasheet for **TA316098**

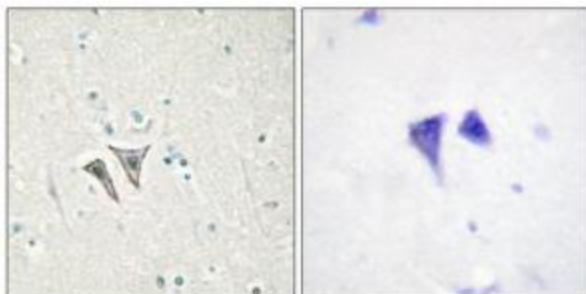
Activin A Receptor Type IC (ACVR1C) Rabbit Polyclonal Antibody

Product data:

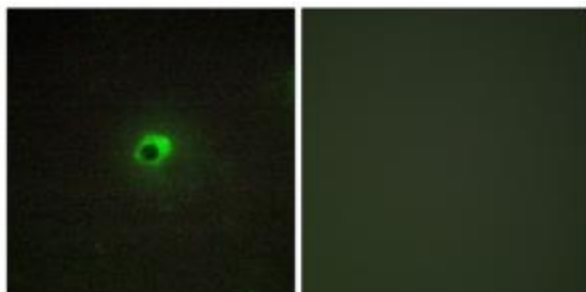
Product Type:	Primary Antibodies
Applications:	IF, IHC
Recommended Dilution:	IHC: 1:50~1:100, IF: 1:00~1:500, ELISA: 1:20000
Reactivity:	Human, Mouse, Rat
Host:	Rabbit
Isotype:	IgG
Clonality:	Polyclonal
Immunogen:	The antiserum was produced against synthesized peptide derived from internal of human ACTR-1C.
Formulation:	Phosphate buffered saline (without Mg ²⁺ and Ca ²⁺), pH 7.4, 150mM NaCl, 0.02% sodium azide and 50% glycerol.
Concentration:	lot specific
Purification:	The antibody was affinity-purified from rabbit antiserum by affinity-chromatography using epitope-specific immunogen.
Conjugation:	Unconjugated
Storage:	Store at -20°C as received.
Stability:	Stable for 12 months from date of receipt.
Gene Name:	activin A receptor type 1C
Database Link:	NP_660302 Entrez Gene 245921 Rat Entrez Gene 269275 Mouse Entrez Gene 130399 Human Q8NER5
Synonyms:	ACVRLK7; ALK7
Note:	ACTR-1C antibody detects endogenous levels of total ACTR-1C protein.
Protein Families:	Druggable Genome, Protein Kinase, Transmembrane
Protein Pathways:	Adherens junction, Chronic myeloid leukemia, Colorectal cancer, Endocytosis, MAPK signaling pathway, Pancreatic cancer, Pathways in cancer, TGF-beta signaling pathway



[View online »](#)

Product images:

Immunohistochemistry analysis of paraffin-embedded human brain tissue, using ACTR-1C antibody. The picture on the right is treated with the synthesized peptide.



Immunofluorescence analysis of COS-7 cells, using ACTR-1C antibody. The picture on the right is treated with the synthesized peptide.