

Product datasheet for **TA316095**

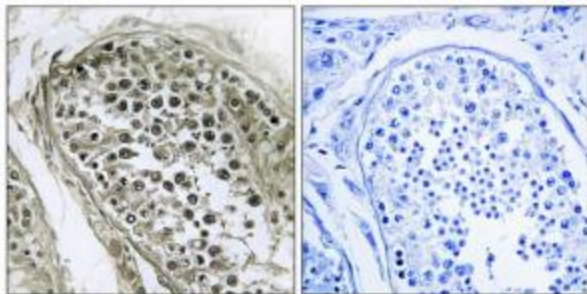
GAB4 Rabbit Polyclonal Antibody

Product data:

Product Type:	Primary Antibodies
Applications:	IHC
Recommended Dilution:	IHC: 1:50~1:100, ELISA: 1:40000
Reactivity:	Human
Host:	Rabbit
Isotype:	IgG
Clonality:	Polyclonal
Immunogen:	The antiserum was produced against synthesized peptide derived from internal of human GAB4.
Formulation:	Phosphate buffered saline (without Mg ²⁺ and Ca ²⁺), pH 7.4, 150mM NaCl, 0.02% sodium azide and 50% glycerol.
Concentration:	lot specific
Purification:	The antibody was affinity-purified from rabbit antiserum by affinity-chromatography using epitope-specific immunogen.
Conjugation:	Unconjugated
Storage:	Store at -20°C as received.
Stability:	Stable for 12 months from date of receipt.
Gene Name:	GRB2 associated binding protein family member 4
Database Link:	NP_001032903 Entrez Gene 128954 Human Q2WGN9
Synonyms:	GAB4
Note:	GAB4 antibody detects endogenous levels of total GAB4 protein.



[View online »](#)

Product images:

Immunohistochemistry analysis of paraffin-embedded human testis tissue using GAB4 antibody. The picture on the right is treated with the synthesized peptide.