

Product datasheet for **TA316094**

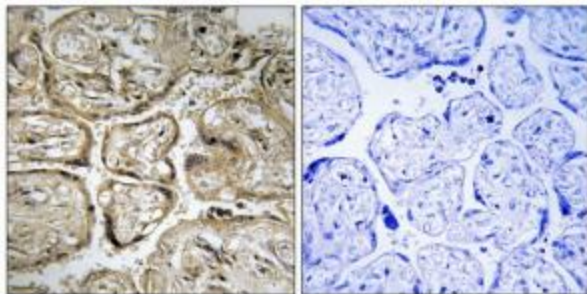
CST9L Rabbit Polyclonal Antibody

Product data:

Product Type:	Primary Antibodies
Applications:	IHC
Recommended Dilution:	IHC: 1:50~1:100, ELISA: 1:10000
Reactivity:	Human
Host:	Rabbit
Isotype:	IgG
Clonality:	Polyclonal
Immunogen:	The antiserum was produced against synthesized peptide derived from internal of human CST9L.
Formulation:	Phosphate buffered saline (without Mg ²⁺ and Ca ²⁺), pH 7.4, 150mM NaCl, 0.02% sodium azide and 50% glycerol.
Concentration:	lot specific
Purification:	The antibody was affinity-purified from rabbit antiserum by affinity-chromatography using epitope-specific immunogen.
Conjugation:	Unconjugated
Storage:	Store at -20°C as received.
Stability:	Stable for 12 months from date of receipt.
Gene Name:	cystatin 9-like
Database Link:	NP_542177 Entrez Gene 128821 Human Q9H4G1
Synonyms:	bA218C14.1; CTES7B
Note:	CST9L antibody detects endogenous levels of total CST9L protein.
Protein Families:	Secreted Protein, Transmembrane



[View online »](#)

Product images:

Immunohistochemistry analysis of paraffin-embedded human placenta tissue using CST9L antibody. The picture on the right is treated with the synthesized peptide.