

Product datasheet for **TA316092**

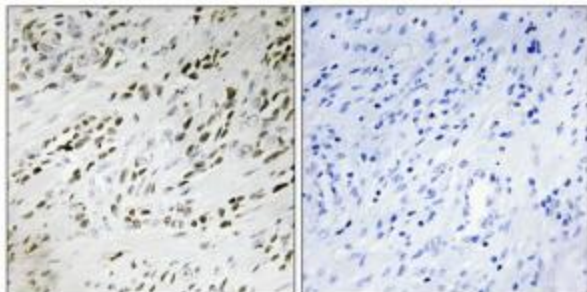
Teashirt homolog 2 (TSHZ2) Rabbit Polyclonal Antibody

Product data:

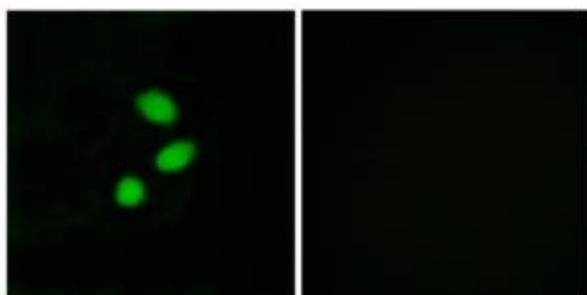
Product Type:	Primary Antibodies
Applications:	IF, IHC
Recommended Dilution:	IHC: 1:50~1:100, IF: 1:100~1:500, ELISA: 1:20000
Reactivity:	Human, Mouse
Host:	Rabbit
Isotype:	IgG
Clonality:	Polyclonal
Immunogen:	The antiserum was produced against synthesized peptide derived from internal of human TSH2.
Formulation:	Phosphate buffered saline (without Mg ²⁺ and Ca ²⁺), pH 7.4, 150mM NaCl, 0.02% sodium azide and 50% glycerol.
Concentration:	lot specific
Purification:	The antibody was affinity-purified from rabbit antiserum by affinity-chromatography using epitope-specific immunogen.
Conjugation:	Unconjugated
Storage:	Store at -20°C as received.
Stability:	Stable for 12 months from date of receipt.
Gene Name:	teashirt zinc finger homeobox 2
Database Link:	NP_775756 Entrez Gene 228911 Mouse Entrez Gene 128553 Human Q9NRE2
Synonyms:	C20orf17; OVC10-2; TSH2; ZABC2; ZNF218
Note:	TSH2 antibody detects endogenous levels of total TSH2 protein.



[View online »](#)

Product images:

Immunohistochemistry analysis of paraffin-embedded human prostate carcinoma tissue, using TSH2 antibody. The picture on the right is treated with the synthesized peptide.



Immunofluorescence analysis of MCF-7 cells, using TSH2 antibody. The picture on the right is treated with the synthesized peptide.