

## Product datasheet for **TA316091**

### OR10Z1 Rabbit Polyclonal Antibody

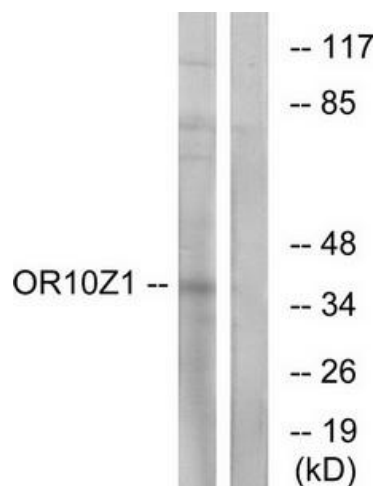
#### Product data:

Product Type:	Primary Antibodies
Applications:	IF, WB
Recommended Dilution:	WB: 1:500~1:3000, IF: 1:100~1:500, ELISA: 1:20000
Reactivity:	Human
Host:	Rabbit
Isotype:	IgG
Clonality:	Polyclonal
Immunogen:	The antiserum was produced against synthesized peptide derived from internal of human OR10Z1.
Formulation:	Phosphate buffered saline (without Mg <sup>2+</sup> and Ca <sup>2+</sup> ), pH 7.4, 150mM NaCl, 0.02% sodium azide and 50% glycerol.
Concentration:	lot specific
Purification:	The antibody was affinity-purified from rabbit antiserum by affinity-chromatography using epitope-specific immunogen.
Conjugation:	Unconjugated
Storage:	Store at -20°C as received.
Stability:	Stable for 12 months from date of receipt.
Gene Name:	olfactory receptor family 10 subfamily Z member 1
Database Link:	<a href="#">NP_001004478</a> <a href="#">Entrez Gene 128368 Human</a> <a href="#">Q8NGY1</a>
Synonyms:	OR1-15
Note:	OR10Z1 antibody detects endogenous levels of total OR10Z1 protein.
Protein Families:	Transmembrane
Protein Pathways:	Olfactory transduction

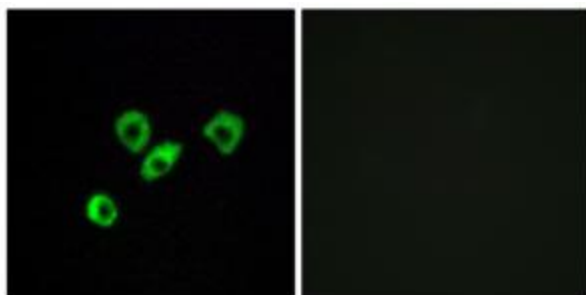


[View online »](#)

## Product images:



Western blot analysis of extracts from COS-7 cells, using OR10Z1 antibody. The lane on the right is treated with the synthesized peptide.



Immunofluorescence analysis of MCF-7 cells, using OR10Z1 antibody. The picture on the right is treated with the synthesized peptide.