

Product datasheet for **TA316076**

MOBKL2A (MOB3A) Rabbit Polyclonal Antibody

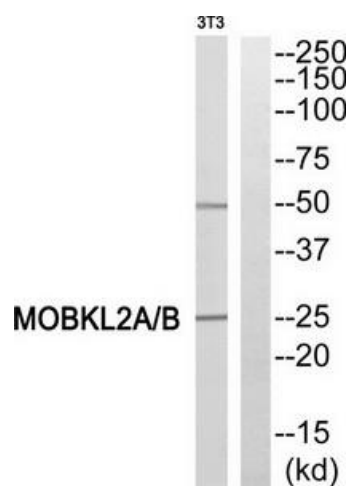
Product data:

Product Type:	Primary Antibodies
Applications:	WB
Recommended Dilution:	WB: 1:500~1:3000, ELISA: 1:5000
Reactivity:	Human, Mouse
Host:	Rabbit
Isotype:	IgG
Clonality:	Polyclonal
Immunogen:	The antiserum was produced against synthesized peptide derived from internal of human MOBKL2A/B.
Formulation:	Phosphate buffered saline (without Mg ²⁺ and Ca ²⁺), pH 7.4, 150mM NaCl, 0.02% sodium azide and 50% glycerol.
Concentration:	lot specific
Purification:	The antibody was affinity-purified from rabbit antiserum by affinity-chromatography using epitope-specific immunogen.
Conjugation:	Unconjugated
Storage:	Store at -20°C as received.
Stability:	Stable for 12 months from date of receipt.
Gene Name:	MOB kinase activator 3A
Database Link:	NP_570719 Entrez Gene 208228 Mouse Entrez Gene 126308 Human Q96BX8
Synonyms:	MOB-LAK; MOB1C; MOBKL2A; moblak
Note:	MOBKL2A/B antibody detects endogenous levels of total MOBKL2A/B protein.



[View online »](#)

Product images:



Western blot analysis of extracts from 3T3 cells, using MOBKL2A/B antibody. The lane on the right is treated with the synthesized peptide.