

Product datasheet for **TA316068**

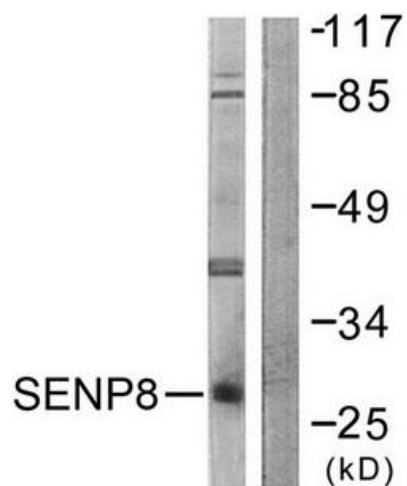
SENP8 Rabbit Polyclonal Antibody

Product data:

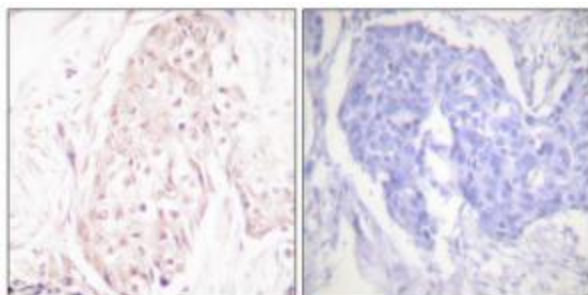
Product Type:	Primary Antibodies
Applications:	IHC, WB
Recommended Dilution:	WB: 1:500~1:3000, IHC: 1:50~1:100, ELISA: 1:10000
Reactivity:	Human, Mouse, Rat
Host:	Rabbit
Isotype:	IgG
Clonality:	Polyclonal
Immunogen:	The antiserum was produced against synthesized peptide derived from Internal of human SENP8.
Formulation:	Phosphate buffered saline (without Mg ²⁺ and Ca ²⁺), pH 7.4, 150mM NaCl, 0.02% sodium azide and 50% glycerol.
Concentration:	lot specific
Purification:	The antibody was affinity-purified from rabbit antiserum by affinity-chromatography using epitope-specific immunogen.
Conjugation:	Unconjugated
Storage:	Store at -20°C as received.
Stability:	Stable for 12 months from date of receipt.
Gene Name:	SUMO/sentrin peptidase family member, NEDD8 specific
Database Link:	NP_001159812 Entrez Gene 71599 MouseEntrez Gene 315723 RatEntrez Gene 123228 Human Q96LD8
Synonyms:	DEN1; NEDP1; PRSC2
Note:	SENP8 antibody detects endogenous levels of total SENP8 protein.
Protein Families:	Druggable Genome, Protease



[View online »](#)

Product images:

Western blot analysis of extracts from HuvEc cells, using SENP8 antibody. The lane on the right is treated with the synthesized peptide.



Immunohistochemistry analysis of paraffin-embedded human breast carcinoma tissue using SENP8 antibody. The picture on the right is treated with the synthesized peptide.