

Product datasheet for **TA316058**

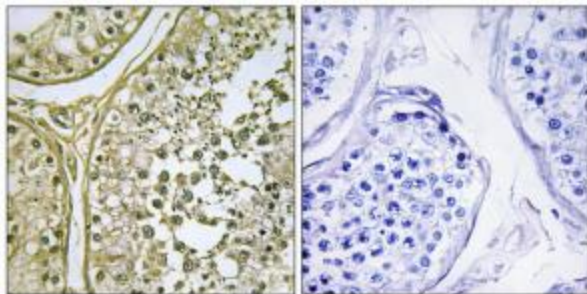
CSNK1A1L Rabbit Polyclonal Antibody

Product data:

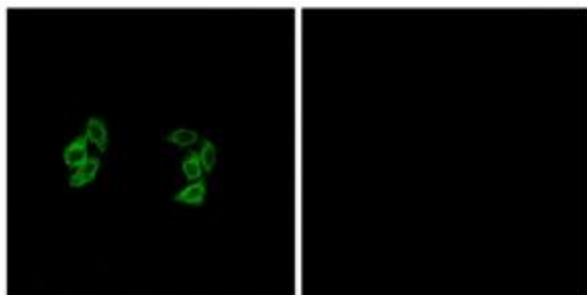
Product Type:	Primary Antibodies
Applications:	IF, IHC
Recommended Dilution:	IHC: 1:50~1:100, IF: 1:100~1:500, ELISA: 1:20000
Reactivity:	Human, Mouse, Rat
Host:	Rabbit
Isotype:	IgG
Clonality:	Polyclonal
Immunogen:	The antiserum was produced against synthesized peptide derived from internal of human CKI-a1/L.
Formulation:	Phosphate buffered saline (without Mg ²⁺ and Ca ²⁺), pH 7.4, 150mM NaCl, 0.02% sodium azide and 50% glycerol.
Concentration:	lot specific
Purification:	The antibody was affinity-purified from rabbit antiserum by affinity-chromatography using epitope-specific immunogen.
Conjugation:	Unconjugated
Storage:	Store at -20°C as received.
Stability:	Stable for 12 months from date of receipt.
Gene Name:	casein kinase 1 alpha 1 like
Database Link:	NP_660204 Entrez Gene 122011 Human Q8N752
Synonyms:	CK1
Note:	CKI-.1/L antibody detects endogenous levels of total CKI-.1/L protein.
Protein Families:	Druggable Genome, Protein Kinase
Protein Pathways:	Hedgehog signaling pathway, Wnt signaling pathway



[View online »](#)

Product images:

Immunohistochemistry analysis of paraffin-embedded human testis tissue, using CKI-a1/L antibody. The picture on the right is treated with the synthesized peptide.



Immunofluorescence analysis of A549 cells, using CKI-a1/L antibody. The picture on the right is treated with the synthesized peptide.