

Product datasheet for **TA316054**

Tryptophan 5 hydroxylase 2 (TPH2) Rabbit Polyclonal Antibody

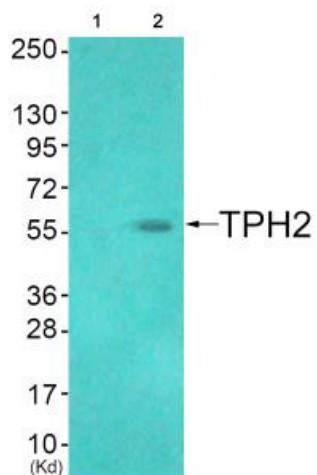
Product data:

Product Type:	Primary Antibodies
Applications:	WB
Recommended Dilution:	WB: 1:500~1:3000, IHC: 1:50~1:100, ELISA: 1:40000
Reactivity:	Human, Mouse, Rat
Host:	Rabbit
Isotype:	IgG
Clonality:	Polyclonal
Immunogen:	The antiserum was produced against synthesized non-phosphopeptide derived from human TPH2 around the phosphorylation site of serine 19 (G-FI-SP-L-D).
Formulation:	Phosphate buffered saline (without Mg ²⁺ and Ca ²⁺), pH 7.4, 150mM NaCl, 0.02% sodium azide and 50% glycerol.
Concentration:	lot specific
Purification:	The antibody was affinity-purified from rabbit antiserum by affinity-chromatography using epitope-specific immunogen.
Conjugation:	Unconjugated
Storage:	Store at -20°C as received.
Stability:	Stable for 12 months from date of receipt.
Gene Name:	tryptophan hydroxylase 2
Database Link:	NP_775489 Entrez Gene 216343 Mouse Entrez Gene 317675 Rat Entrez Gene 121278 Human Q8IWU9
Synonyms:	ADHD7; NTPH
Note:	TPH2 (Ab-19) antibody detects endogenous levels of total TPH2 protein.
Protein Families:	Druggable Genome
Protein Pathways:	Metabolic pathways, Tryptophan metabolism

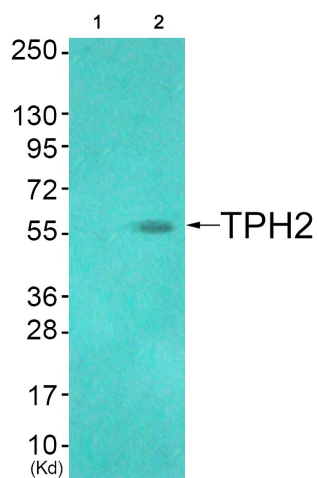


[View online »](#)

Product images:



Western blot analysis of extracts from HeLa, Cos7 and 293 cells, using TPH2 (Ab-19) antibody. The lane on the right is treated with the synthesized peptide.



Western blot analysis of extracts from HuvEc cells (Lane 2), using TPH2 (Ab-19) Antibody. The lane on the left is treated with synthesized peptide.