

Product datasheet for **TA316053**

OR10AD1 Rabbit Polyclonal Antibody

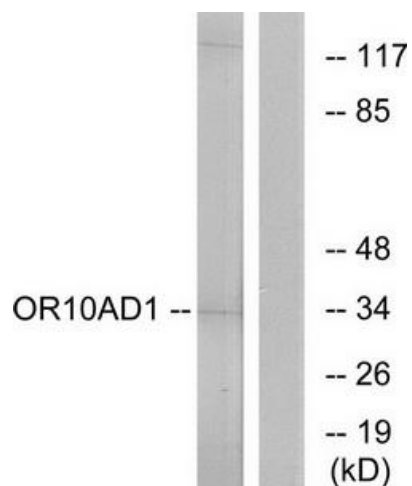
Product data:

Product Type:	Primary Antibodies
Applications:	IF, WB
Recommended Dilution:	WB: 1:500~1:3000, IF: 1:100~1:500, ELISA: 1:40000
Reactivity:	Human
Host:	Rabbit
Isotype:	IgG
Clonality:	Polyclonal
Immunogen:	The antiserum was produced against synthesized peptide derived from internal of human OR10AD1.
Formulation:	Phosphate buffered saline (without Mg ²⁺ and Ca ²⁺), pH 7.4, 150mM NaCl, 0.02% sodium azide and 50% glycerol.
Concentration:	lot specific
Purification:	The antibody was affinity-purified from rabbit antiserum by affinity-chromatography using epitope-specific immunogen.
Conjugation:	Unconjugated
Storage:	Store at -20°C as received.
Stability:	Stable for 12 months from date of receipt.
Gene Name:	olfactory receptor family 10 subfamily AD member 1
Database Link:	NP_001004134 Entrez Gene 121275 Human Q8NGE0
Synonyms:	OR10AD1P; OR12-1
Note:	OR10AD1 antibody detects endogenous levels of total OR10AD1 protein.
Protein Families:	Druggable Genome, Transmembrane
Protein Pathways:	Olfactory transduction

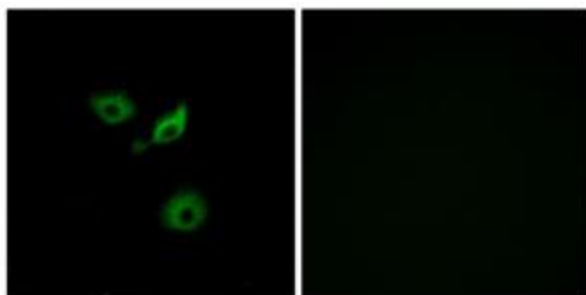


[View online »](#)

Product images:



Western blot analysis of extracts from HeLa cells, using OR10AD1 antibody. The lane on the right is treated with the synthesized peptide.



Immunofluorescence analysis of A549 cells, using OR10AD1 antibody. The picture on the right is treated with the synthesized peptide.