

Product datasheet for **TA316045**

OR5P3 Rabbit Polyclonal Antibody

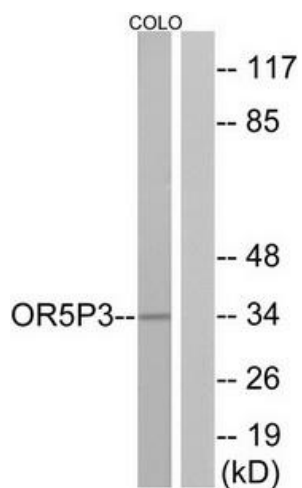
Product data:

Product Type:	Primary Antibodies
Applications:	WB
Recommended Dilution:	WB: 1:500~1:3000, ELISA: 1:10000
Reactivity:	Human
Host:	Rabbit
Isotype:	IgG
Clonality:	Polyclonal
Immunogen:	The antiserum was produced against synthesized peptide derived from internal of human OR5P3.
Formulation:	Phosphate buffered saline (without Mg ²⁺ and Ca ²⁺), pH 7.4, 150mM NaCl, 0.02% sodium azide and 50% glycerol.
Concentration:	lot specific
Purification:	The antibody was affinity-purified from rabbit antiserum by affinity-chromatography using epitope-specific immunogen.
Conjugation:	Unconjugated
Storage:	Store at -20°C as received.
Stability:	Stable for 12 months from date of receipt.
Gene Name:	olfactory receptor family 5 subfamily P member 3
Database Link:	NP_703146 Entrez Gene 120066 Human Q8WZ94
Synonyms:	JCG1
Note:	OR5P3 antibody detects endogenous levels of total OR5P3 protein.
Protein Families:	Druggable Genome, Transmembrane
Protein Pathways:	Olfactory transduction



[View online »](#)

Product images:



Western blot analysis of extracts from COLO cells, using OR5P3 antibody. The lane on the right is treated with the synthesized peptide.