

Product datasheet for **TA316044**

OR5P2 Rabbit Polyclonal Antibody

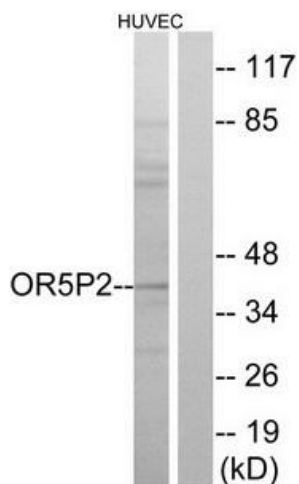
Product data:

Product Type:	Primary Antibodies
Applications:	IF, WB
Recommended Dilution:	WB: 1:500~1:3000, IF: 1:100~1:500, ELISA: 1:10000
Reactivity:	Human
Host:	Rabbit
Isotype:	IgG
Clonality:	Polyclonal
Immunogen:	The antiserum was produced against synthesized peptide derived from internal of human OR5P2.
Formulation:	Phosphate buffered saline (without Mg ²⁺ and Ca ²⁺), pH 7.4, 150mM NaCl, 0.02% sodium azide and 50% glycerol.
Concentration:	lot specific
Purification:	The antibody was affinity-purified from rabbit antiserum by affinity-chromatography using epitope-specific immunogen.
Conjugation:	Unconjugated
Storage:	Store at -20°C as received.
Stability:	Stable for 12 months from date of receipt.
Gene Name:	olfactory receptor family 5 subfamily P member 2
Database Link:	NP_703145 Entrez Gene 120065 Human Q8WZ92
Synonyms:	JCG3; JCG4
Note:	OR5P2 antibody detects endogenous levels of total OR5P2 protein.
Protein Families:	Druggable Genome, Transmembrane
Protein Pathways:	Olfactory transduction

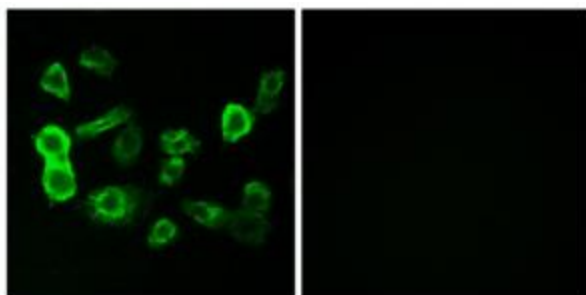


[View online »](#)

Product images:



Western blot analysis of extracts from HUVEC cells, using OR5P2 antibody. The lane on the right is treated with the synthesized peptide.



Immunofluorescence analysis of MCF-7 cells, using OR5P2 antibody. The picture on the right is treated with the synthesized peptide.