

Product datasheet for **TA316039**

OR52E2 Rabbit Polyclonal Antibody

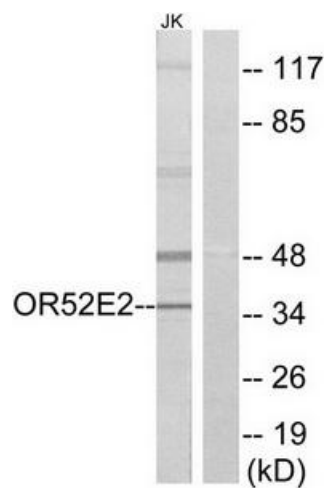
Product data:

Product Type:	Primary Antibodies
Applications:	WB
Recommended Dilution:	WB: 1:500~1:3000, ELISA: 1:1000
Reactivity:	Human
Host:	Rabbit
Isotype:	IgG
Clonality:	Polyclonal
Immunogen:	The antiserum was produced against synthesized peptide derived from C-terminal of human OR52E2.
Formulation:	Phosphate buffered saline (without Mg ²⁺ and Ca ²⁺), pH 7.4, 150mM NaCl, 0.02% sodium azide and 50% glycerol.
Concentration:	lot specific
Purification:	The antibody was affinity-purified from rabbit antiserum by affinity-chromatography using epitope-specific immunogen.
Conjugation:	Unconjugated
Storage:	Store at -20°C as received.
Stability:	Stable for 12 months from date of receipt.
Gene Name:	olfactory receptor family 52 subfamily E member 2
Database Link:	NP_001005164 Entrez Gene 119678 Human Q8NGI4
Synonyms:	family 10; family 52; member 1 pseudogene; member 2; olfactory receptor; OTTHUMP00000069572; subfamily AC; subfamily E
Note:	OR52E2 antibody detects endogenous levels of total OR52E2 protein.
Protein Families:	Transmembrane
Protein Pathways:	Olfactory transduction



[View online »](#)

Product images:



Western blot analysis of extracts from Jurkat cells, using OR52E2 antibody. The lane on the right is treated with the synthesized peptide.