

Product datasheet for **TA316038**

SFXN4 Rabbit Polyclonal Antibody

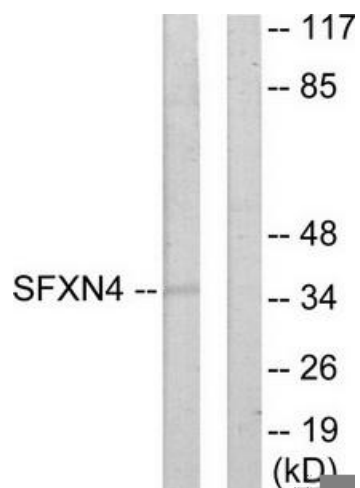
Product data:

Product Type:	Primary Antibodies
Applications:	WB
Recommended Dilution:	WB: 1:500~1:3000, ELISA: 1:5000
Reactivity:	Human
Host:	Rabbit
Isotype:	IgG
Clonality:	Polyclonal
Immunogen:	The antiserum was produced against synthesized peptide derived from N-terminal of human SFXN4.
Formulation:	Phosphate buffered saline (without Mg ²⁺ and Ca ²⁺), pH 7.4, 150mM NaCl, 0.02% sodium azide and 50% glycerol.
Concentration:	lot specific
Purification:	The antibody was affinity-purified from rabbit antiserum by affinity-chromatography using epitope-specific immunogen.
Conjugation:	Unconjugated
Storage:	Store at -20°C as received.
Stability:	Stable for 12 months from date of receipt.
Gene Name:	sideroflexin 4
Database Link:	NP_849198 Entrez Gene 119559 Human Q6P4A7
Synonyms:	BCRM1; breast cancer resistance marker 1; OTTHUMP00000020591; sideroflexin 4
Note:	SFXN4 antibody detects endogenous levels of total SFXN4 protein.
Protein Families:	Transmembrane



[View online »](#)

Product images:



Western blot analysis of extracts from HUVEC cells, using SFXN4 antibody. The lane on the right is treated with the synthesized peptide.