

Product datasheet for **TA316032**

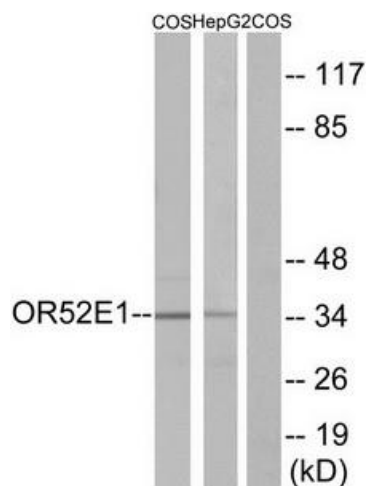
RAB3IP Rabbit Polyclonal Antibody

Product data:

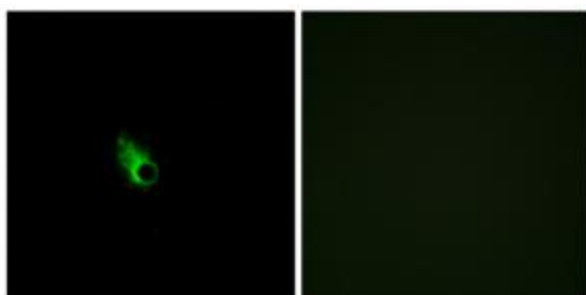
Product Type:	Primary Antibodies
Applications:	IF, WB
Recommended Dilution:	WB: 1:500~1:3000, IF: 1:100~1:500, ELISA: 1:1000
Reactivity:	Human
Host:	Rabbit
Isotype:	IgG
Clonality:	Polyclonal
Immunogen:	The antiserum was produced against synthesized peptide derived from internal of human OR52E1.
Formulation:	Phosphate buffered saline (without Mg ²⁺ and Ca ²⁺), pH 7.4, 150mM NaCl, 0.02% sodium azide and 50% glycerol.
Concentration:	lot specific
Purification:	The antibody was affinity-purified from rabbit antiserum by affinity-chromatography using epitope-specific immunogen.
Conjugation:	Unconjugated
Storage:	Store at -20°C as received.
Stability:	Stable for 12 months from date of receipt.
Gene Name:	RAB3A interacting protein
Database Link:	NP_001019818 Entrez Gene 117177 Human Q96QF0
Synonyms:	RABIN3; RABIN8
Note:	OR52E1 antibody detects endogenous levels of total OR52E1 protein.



[View online »](#)

Product images:


Western blot analysis of extracts from COS-7 cells and HepG2 cells, using OR52E1 antibody. The lane on the right is treated with the synthesized peptide.



Immunofluorescence analysis of HeLa cells, using OR52E1 antibody. The picture on the right is treated with the synthesized peptide.