

Product datasheet for **TA316026**

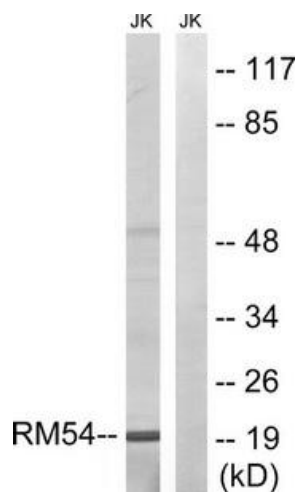
MRPL54 Rabbit Polyclonal Antibody

Product data:

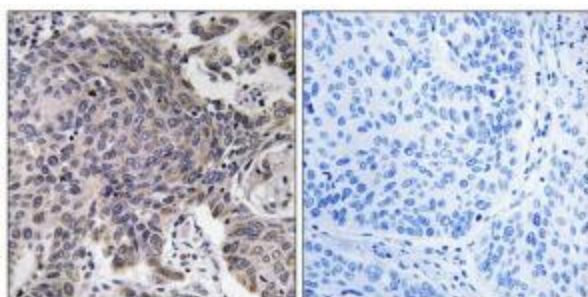
Product Type:	Primary Antibodies
Applications:	IHC, WB
Recommended Dilution:	WB: 1:500~1:3000, IHC: 1:50~1:100, ELISA: 1:40000
Reactivity:	Human, Mouse
Host:	Rabbit
Isotype:	IgG
Clonality:	Polyclonal
Immunogen:	The antiserum was produced against synthesized peptide derived from internal of human MRPL54.
Formulation:	Phosphate buffered saline (without Mg ²⁺ and Ca ²⁺), pH 7.4, 150mM NaCl, 0.02% sodium azide and 50% glycerol.
Concentration:	lot specific
Purification:	The antibody was affinity-purified from rabbit antiserum by affinity-chromatography using epitope-specific immunogen.
Conjugation:	Unconjugated
Storage:	Store at -20°C as received.
Stability:	Stable for 12 months from date of receipt.
Gene Name:	mitochondrial ribosomal protein L54
Database Link:	NP_758455 Entrez Gene 66047 Mouse Entrez Gene 116541 Human Q6P161
Synonyms:	L54mt; MRP-L54
Note:	MRPL54 antibody detects endogenous levels of total MRPL54 protein.



[View online »](#)

Product images:

Western blot analysis of extracts from Jurkat cells, using MRPL54 antibody. The lane on the right is treated with the synthesized peptide.



Immunohistochemistry analysis of paraffin-embedded human lung carcinoma tissue using MRPL54 antibody. The picture on the right is treated with the synthesized peptide.