

Product datasheet for **TA316018**

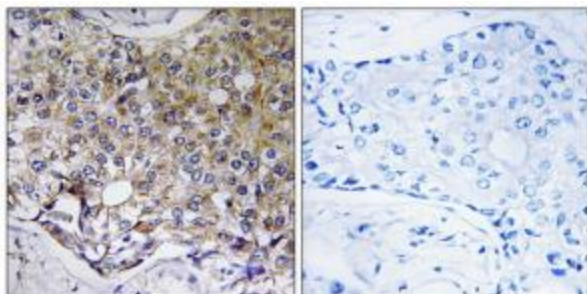
ATG4A Rabbit Polyclonal Antibody

Product data:

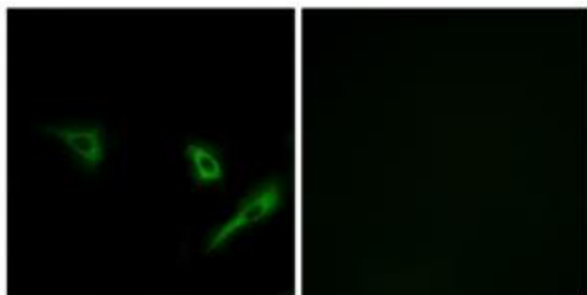
Product Type:	Primary Antibodies
Applications:	IF, IHC
Recommended Dilution:	IHC: 1:50~1:100, IF: 1:100~1:500, ELISA: 1:20000
Reactivity:	Human, Mouse
Host:	Rabbit
Isotype:	IgG
Clonality:	Polyclonal
Immunogen:	The antiserum was produced against synthesized peptide derived from C-terminal of human ATG4A.
Formulation:	Phosphate buffered saline (without Mg ²⁺ and Ca ²⁺), pH 7.4, 150mM NaCl, 0.02% sodium azide and 50% glycerol.
Concentration:	lot specific
Purification:	The antibody was affinity-purified from rabbit antiserum by affinity-chromatography using epitope-specific immunogen.
Conjugation:	Unconjugated
Storage:	Store at -20°C as received.
Stability:	Stable for 12 months from date of receipt.
Gene Name:	autophagy related 4A cysteine peptidase
Database Link:	NP_443168 Entrez Gene 666468 Mouse Entrez Gene 115201 Human Q8WYN0
Synonyms:	APG4A; AUTL2
Note:	ATG4A antibody detects endogenous levels of total ATG4A protein.
Protein Families:	Protease
Protein Pathways:	Regulation of autophagy



[View online »](#)

Product images:

Immunohistochemistry analysis of paraffin-embedded human breast carcinoma tissue using ATG4A antibody. The picture on the right is treated with the synthesized peptide.



Immunofluorescence analysis of A549 cells, using ATG4A antibody. The picture on the right is treated with the synthesized peptide.