

Product datasheet for **TA316016**

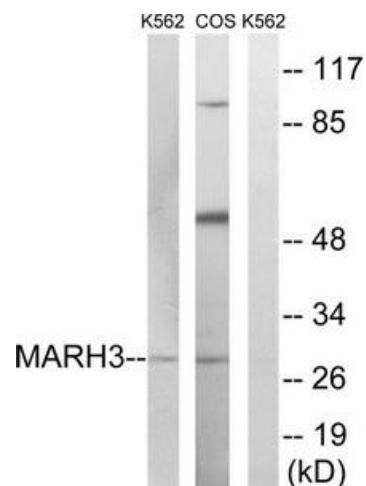
MARCHF3 Rabbit Polyclonal Antibody

Product data:

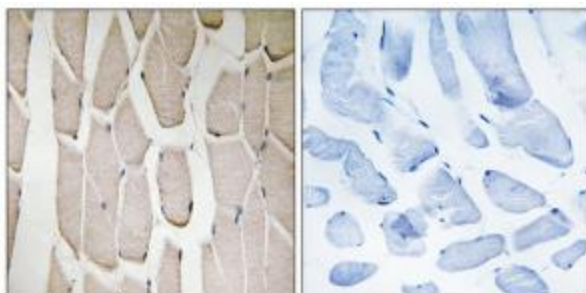
| | |
|------------------------------|--------------------------------------------------------------------------------------------------------------------------------------|
| Product Type: | Primary Antibodies |
| Applications: | IHC, WB |
| Recommended Dilution: | WB: 1:500~1:3000, IHC: 1:50~1:100, ELISA: 1:40000 |
| Reactivity: | Human, Mouse, Rat |
| Host: | Rabbit |
| Isotype: | IgG |
| Clonality: | Polyclonal |
| Immunogen: | The antiserum was produced against synthesized peptide derived from internal of human MARCH3. |
| Formulation: | Phosphate buffered saline (without Mg ²⁺ and Ca ²⁺), pH 7.4, 150mM NaCl, 0.02% sodium azide and 50% glycerol. |
| Concentration: | lot specific |
| Purification: | The antibody was affinity-purified from rabbit antiserum by affinity-chromatography using epitope-specific immunogen. |
| Conjugation: | Unconjugated |
| Storage: | Store at -20°C as received. |
| Stability: | Stable for 12 months from date of receipt. |
| Gene Name: | membrane associated ring-CH-type finger 3 |
| Database Link: | NP_848545 Entrez Gene 320253 MouseEntrez Gene 364878 RatEntrez Gene 115123 Human Q86UD3 |
| Synonyms: | MARCH-III; RNF173 |
| Note: | MARCH3 antibody detects endogenous levels of total MARCH3 protein. |
| Protein Families: | Druggable Genome, Transmembrane |



[View online »](#)

Product images:

Western blot analysis of extracts from K562 cells and COS-7 cells, using MARCH3 antibody. The lane on the right is treated with the synthesized peptide.



Immunohistochemistry analysis of paraffin-embedded human brain tissue using MARCH3 antibody. The picture on the right is treated with the synthesized peptide.