

Product datasheet for **TA316012**

TUBGCP5 Rabbit Polyclonal Antibody

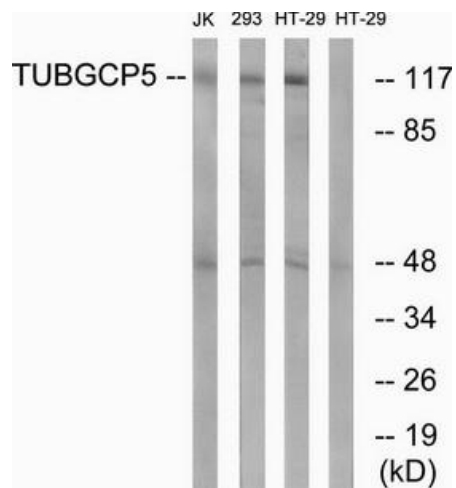
Product data:

Product Type:	Primary Antibodies
Applications:	WB
Recommended Dilution:	WB: 1:500~1:3000, ELISA: 1:20000
Reactivity:	Human, Mouse
Host:	Rabbit
Isotype:	IgG
Clonality:	Polyclonal
Immunogen:	The antiserum was produced against synthesized peptide derived from internal of human TUBGCP5.
Formulation:	Phosphate buffered saline (without Mg ²⁺ and Ca ²⁺), pH 7.4, 150mM NaCl, 0.02% sodium azide and 50% glycerol.
Concentration:	lot specific
Purification:	The antibody was affinity-purified from rabbit antiserum by affinity-chromatography using epitope-specific immunogen.
Conjugation:	Unconjugated
Storage:	Store at -20°C as received.
Stability:	Stable for 12 months from date of receipt.
Gene Name:	tubulin gamma complex associated protein 5
Database Link:	NP_001096080 Entrez Gene 233276 Mouse Entrez Gene 114791 Human Q96RT8
Synonyms:	GCP5
Note:	TUBGCP5 antibody detects endogenous levels of total TUBGCP5 protein.



[View online »](#)

Product images:



Western blot analysis of extracts from Jurkat cells, 293 cells and HT-29 cells, using TUBGCP5 antibody. The lane on the right is treated with the synthesized peptide.