

## Product datasheet for **TA316008**

### TUBA3D Rabbit Polyclonal Antibody

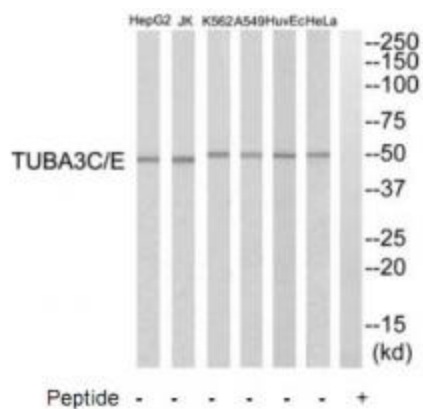
#### Product data:

Product Type:	Primary Antibodies
Applications:	WB
Recommended Dilution:	WB: 1:500~1:3000, ELISA: 1:5000
Reactivity:	Human, Mouse, Rat
Host:	Rabbit
Isotype:	IgG
Clonality:	Polyclonal
Immunogen:	The antiserum was produced against synthesized peptide derived from C-terminal of human TUBA3C/E.
Formulation:	Phosphate buffered saline (without Mg <sup>2+</sup> and Ca <sup>2+</sup> ), pH 7.4, 150mM NaCl, 0.02% sodium azide and 50% glycerol.
Concentration:	lot specific
Purification:	The antibody was affinity-purified from rabbit antiserum by affinity-chromatography using epitope-specific immunogen.
Conjugation:	Unconjugated
Storage:	Store at -20°C as received.
Stability:	Stable for 12 months from date of receipt.
Gene Name:	tubulin alpha 3d
Database Link:	<a href="#">NP_525125</a> <a href="#">Entrez Gene 113457 Human</a> <a href="#">P0DPH7</a>
Synonyms:	H2-ALPHA
Note:	TUBA3C/E antibody detects endogenous levels of total TUBA3C/E protein.
Protein Families:	Druggable Genome
Protein Pathways:	Gap junction, Pathogenic Escherichia coli infection



[View online »](#)

Product images:



Western blot analysis of extracts from HuvEc cells, K562 cells, HepG2 cells, HeLa cells, A549 cells and Jurkat cells, using TUBA3C/E antibody. The lane on the right is treated with the synthesized peptide.