

Product datasheet for **TA316005**

VPS26B Rabbit Polyclonal Antibody

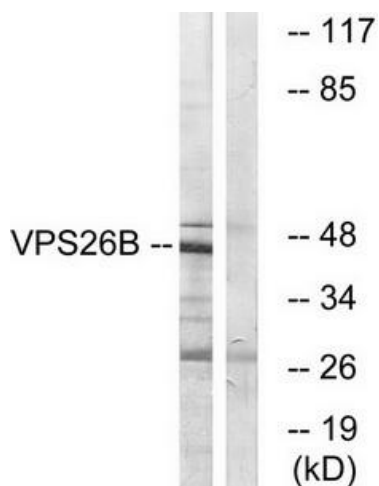
Product data:

Product Type:	Primary Antibodies
Applications:	WB
Recommended Dilution:	WB: 1:500~1:3000, ELISA: 1:10000
Reactivity:	Human, Mouse, Rat
Host:	Rabbit
Isotype:	IgG
Clonality:	Polyclonal
Immunogen:	The antiserum was produced against synthesized peptide derived from internal of human VP26B.
Formulation:	Phosphate buffered saline (without Mg ²⁺ and Ca ²⁺), pH 7.4, 150mM NaCl, 0.02% sodium azide and 50% glycerol.
Concentration:	lot specific
Purification:	The antibody was affinity-purified from rabbit antiserum by affinity-chromatography using epitope-specific immunogen.
Conjugation:	Unconjugated
Storage:	Store at -20°C as received.
Stability:	Stable for 12 months from date of receipt.
Gene Name:	VPS26 retromer complex component B
Database Link:	NP_443107 Entrez Gene 69091 Mouse Entrez Gene 300472 Rat Entrez Gene 112936 Human Q4G0F5
Synonyms:	Pep8b
Note:	VP26B antibody detects endogenous levels of total VP26B protein.

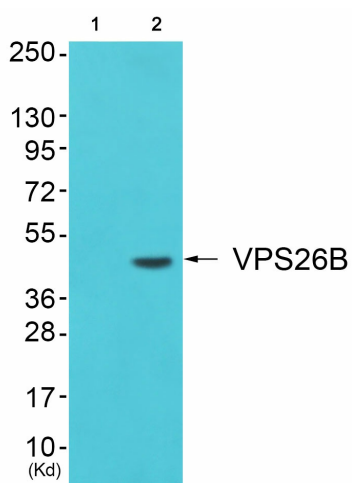


[View online »](#)

Product images:



Western blot analysis of extracts from LOVO cells, using VP26B antibody. The lane on the right is treated with the synthesized peptide.



Western blot analysis of extracts from JK cells (Lane 2), using VPS26B Antibody. The lane on the left is treated with synthesized peptide.