

Product datasheet for **TA316001**

ARHGAP12 Rabbit Polyclonal Antibody

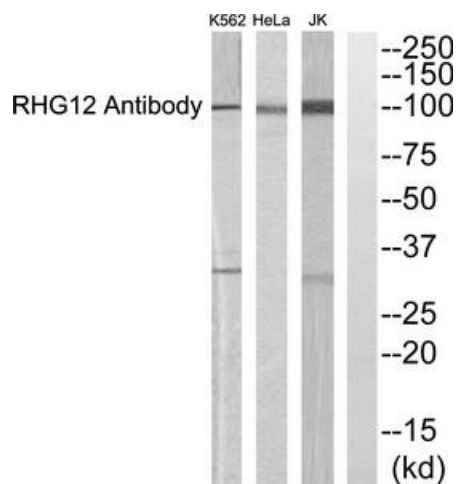
Product data:

Product Type:	Primary Antibodies
Applications:	WB
Recommended Dilution:	WB: 1:500~1:3000, ELISA: 1:10000
Reactivity:	Human, Mouse, Rat
Host:	Rabbit
Isotype:	IgG
Clonality:	Polyclonal
Immunogen:	The antiserum was produced against synthesized peptide derived from Internal of human ARHGAP12.
Formulation:	Phosphate buffered saline (without Mg ²⁺ and Ca ²⁺), pH 7.4, 150mM NaCl, 0.02% sodium azide and 50% glycerol.
Concentration:	lot specific
Purification:	The antibody was affinity-purified from rabbit antiserum by affinity-chromatography using epitope-specific immunogen.
Conjugation:	Unconjugated
Storage:	Store at -20°C as received.
Stability:	Stable for 12 months from date of receipt.
Gene Name:	Rho GTPase activating protein 12
Database Link:	NP_060757 Entrez Gene 75415 MouseEntrez Gene 307016 RatEntrez Gene 94134 Human Q8IWW6
Synonyms:	DKFZp779N2050; FLJ10971; FLJ20737; FLJ21785; FLJ45709
Note:	RHG12 Antibody detects endogenous levels of total ARHGAP12 protein.



[View online »](#)

Product images:



Western blot analysis of extracts from HeLa cells, K562 cells and JurKat cells, using RHG12 Antibody. The lane on the right is treated with the synthesized peptide.