

## Product datasheet for **TA315995**

### ARMC6 Rabbit Polyclonal Antibody

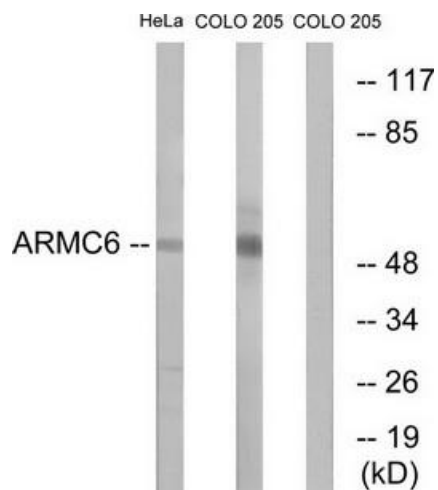
#### Product data:

Product Type:	Primary Antibodies
Applications:	IF, WB
Recommended Dilution:	WB: 1:500~1:3000, IF: 1:100~1:500, ELISA: 1:10000
Reactivity:	Human, Mouse, Rat
Host:	Rabbit
Isotype:	IgG
Clonality:	Polyclonal
Immunogen:	The antiserum was produced against synthesized peptide derived from internal of human ARMC6.
Formulation:	Phosphate buffered saline (without Mg <sup>2+</sup> and Ca <sup>2+</sup> ), pH 7.4, 150mM NaCl, 0.02% sodium azide and 50% glycerol.
Concentration:	lot specific
Purification:	The antibody was affinity-purified from rabbit antiserum by affinity-chromatography using epitope-specific immunogen.
Conjugation:	Unconjugated
Storage:	Store at -20°C as received.
Stability:	Stable for 12 months from date of receipt.
Gene Name:	armadillo repeat containing 6
Database Link:	<a href="#">NP_219483</a> <a href="#">Entrez Gene 76813 MouseEntrez Gene 306352 RatEntrez Gene 93436 Human Q6NXE6</a>
Synonyms:	R30923_1
Note:	ARMC6 antibody detects endogenous levels of total ARMC6 protein.
Protein Families:	Stem cell - Pluripotency

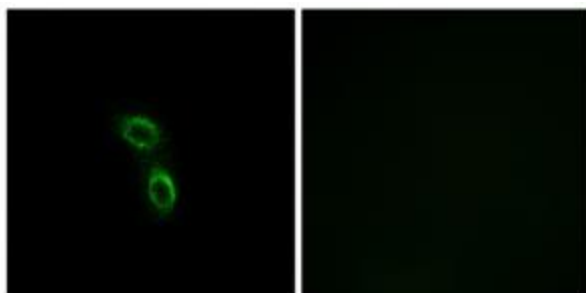


[View online »](#)

## Product images:



Western blot analysis of extracts from HeLa cells and COLO cells, using ARMC6 antibody. The lane on the right is treated with the synthesized peptide.



Immunofluorescence analysis of A549 cells, using ARMC6 antibody. The picture on the right is treated with the synthesized peptide.