

Product datasheet for **TA315993**

CCDC102A Rabbit Polyclonal Antibody

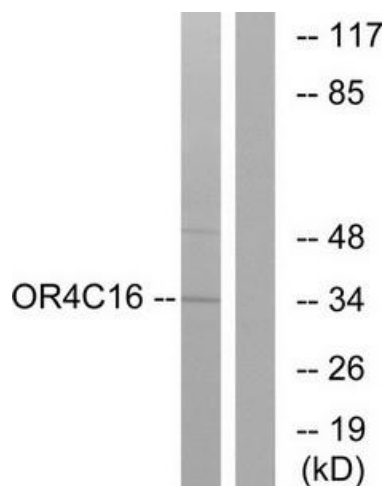
Product data:

Product Type:	Primary Antibodies
Applications:	IF, WB
Recommended Dilution:	WB: 1:500~1:3000, IF: 1:100~1:500, ELISA: 1:20000
Reactivity:	Human
Host:	Rabbit
Isotype:	IgG
Clonality:	Polyclonal
Immunogen:	The antiserum was produced against synthesized peptide derived from C-terminal of human OR4C16.
Formulation:	Phosphate buffered saline (without Mg ²⁺ and Ca ²⁺), pH 7.4, 150mM NaCl, 0.02% sodium azide and 50% glycerol.
Concentration:	lot specific
Purification:	The antibody was affinity-purified from rabbit antiserum by affinity-chromatography using epitope-specific immunogen.
Conjugation:	Unconjugated
Storage:	Store at -20°C as received.
Stability:	Stable for 12 months from date of receipt.
Gene Name:	coiled-coil domain containing 102A
Database Link:	NP_149989 Entrez Gene 92922 Human Q96A19
Synonyms:	MGC10992; MGC13119
Note:	OR4C16 antibody detects endogenous levels of total OR4C16 protein.

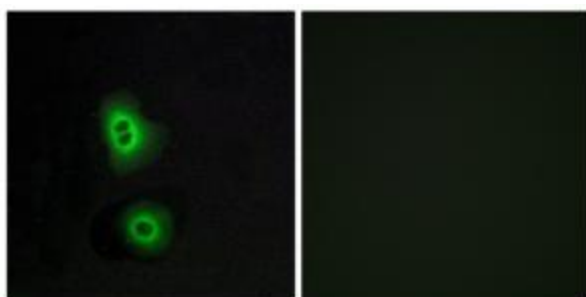


[View online »](#)

Product images:



Western blot analysis of extracts from LOVO cells, using OR4C16 antibody. The lane on the right is treated with the synthesized peptide.



Immunofluorescence analysis of A549 cells, using OR4C16 antibody. The picture on the right is treated with the synthesized peptide.