

## Product datasheet for **TA315979**

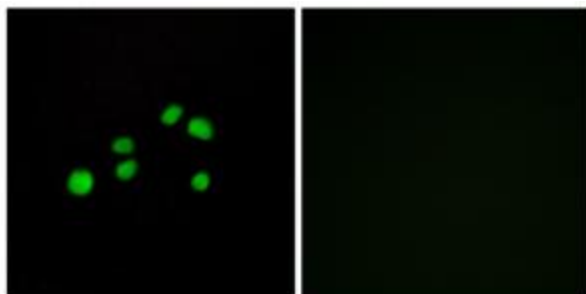
### COL23A1 Rabbit Polyclonal Antibody

#### Product data:

Product Type:	Primary Antibodies
Applications:	IF
Recommended Dilution:	IF: 1:100~1:500, ELISA: 1:10000
Reactivity:	Human, Mouse, Rat
Host:	Rabbit
Isotype:	IgG
Clonality:	Polyclonal
Immunogen:	The antiserum was produced against synthesized peptide derived from internal of human Collagen XXIII a1.
Formulation:	Phosphate buffered saline (without Mg <sup>2+</sup> and Ca <sup>2+</sup> ), pH 7.4, 150mM NaCl, 0.02% sodium azide and 50% glycerol.
Concentration:	lot specific
Purification:	The antibody was affinity-purified from rabbit antiserum by affinity-chromatography using epitope-specific immunogen.
Conjugation:	Unconjugated
Storage:	Store at -20°C as received.
Stability:	Stable for 12 months from date of receipt.
Gene Name:	collagen type XXIII alpha 1 chain
Database Link:	<a href="#">NP_775736</a> <a href="#">Entrez Gene 237759 MouseEntrez Gene 353303 RatEntrez Gene 91522 Human Q86Y22</a>
Synonyms:	DKFZp434K0621
Note:	Collagen XXIII .1 antibody detects endogenous levels of total Collagen XXIII .1 protein.



[View online »](#)

**Product images:**

Immunofluorescence analysis of HepG2 cells, using Collagen XXIII a1 antibody. The picture on the right is treated with the synthesized peptide.