

## Product datasheet for **TA315978**

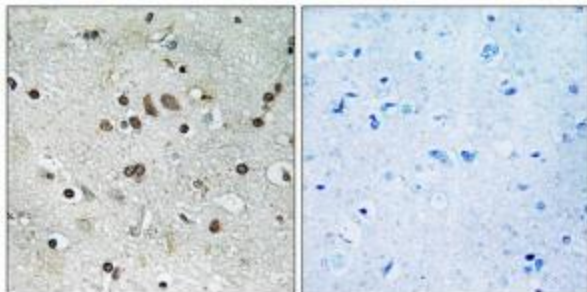
### **BTF3L4 Rabbit Polyclonal Antibody**

#### **Product data:**

<b>Product Type:</b>	Primary Antibodies
<b>Applications:</b>	IHC
<b>Recommended Dilution:</b>	IHC: 1:50~1:100, ELISA: 1:40000
<b>Reactivity:</b>	Human, Mouse
<b>Host:</b>	Rabbit
<b>Isotype:</b>	IgG
<b>Clonality:</b>	Polyclonal
<b>Immunogen:</b>	The antiserum was produced against synthesized peptide derived from internal of human BTF3L4.
<b>Formulation:</b>	Phosphate buffered saline (without Mg <sup>2+</sup> and Ca <sup>2+</sup> ), pH 7.4, 150mM NaCl, 0.02% sodium azide and 50% glycerol.
<b>Concentration:</b>	lot specific
<b>Purification:</b>	The antibody was affinity-purified from rabbit antiserum by affinity-chromatography using epitope-specific immunogen.
<b>Conjugation:</b>	Unconjugated
<b>Storage:</b>	Store at -20°C as received.
<b>Stability:</b>	Stable for 12 months from date of receipt.
<b>Gene Name:</b>	basic transcription factor 3-like 4
<b>Database Link:</b>	<a href="#">NP_689478</a> <a href="#">Entrez Gene 70533 Mouse</a> <a href="#">Entrez Gene 91408 Human</a> <a href="#">Q96K17</a>
<b>Synonyms:</b>	MGC23908; MGC88389; RP4-800M22.5
<b>Note:</b>	BTF3L4 antibody detects endogenous levels of total BTF3L4 protein.



[View online »](#)

**Product images:**

Immunohistochemistry analysis of paraffin-embedded human brain tissue using BTF3L4 antibody. The picture on the right is treated with the synthesized peptide.