

Product datasheet for **TA315973**

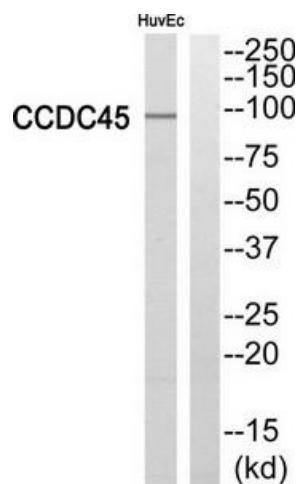
CEP95 Rabbit Polyclonal Antibody

Product data:

Product Type:	Primary Antibodies
Applications:	WB
Recommended Dilution:	WB: 1:500~1:3000, ELISA: 1:5000
Reactivity:	Human, Mouse, Rat
Host:	Rabbit
Isotype:	IgG
Clonality:	Polyclonal
Immunogen:	The antiserum was produced against synthesized peptide derived from internal of human CCDC45.
Formulation:	Phosphate buffered saline (without Mg ²⁺ and Ca ²⁺), pH 7.4, 150mM NaCl, 0.02% sodium azide and 50% glycerol.
Concentration:	lot specific
Purification:	The antibody was affinity-purified from rabbit antiserum by affinity-chromatography using epitope-specific immunogen.
Conjugation:	Unconjugated
Storage:	Store at -20°C as received.
Stability:	Stable for 12 months from date of receipt.
Gene Name:	centrosomal protein 95
Database Link:	NP_612372 Entrez Gene 287766 Rat Entrez Gene 320162 Mouse Entrez Gene 90799 Human Q96GE4
Synonyms:	CCDC45
Note:	CCDC45 antibody detects endogenous levels of total CCDC45 protein.


[View online »](#)

Product images:



Western blot analysis of extracts from HuvEc cells, using CCDC45 antibody. The lane on the right is treated with the synthesized peptide.