

## Product datasheet for **TA315970**

### STARD13 Rabbit Polyclonal Antibody

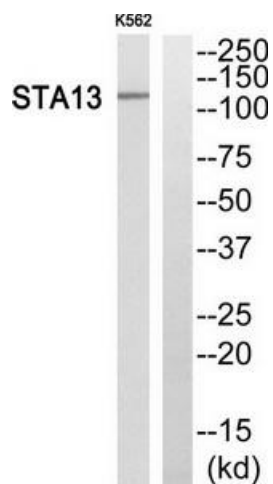
#### Product data:

Product Type:	Primary Antibodies
Applications:	IF, WB
Recommended Dilution:	WB: 1:500~1:3000, IF: 1:100~1:500, ELISA: 1:1000
Reactivity:	Human, Mouse
Host:	Rabbit
Isotype:	IgG
Clonality:	Polyclonal
Immunogen:	The antiserum was produced against synthesized peptide derived from N-terminal of human STA13.
Formulation:	Phosphate buffered saline (without Mg <sup>2+</sup> and Ca <sup>2+</sup> ), pH 7.4, 150mM NaCl, 0.02% sodium azide and 50% glycerol.
Concentration:	lot specific
Purification:	The antibody was affinity-purified from rabbit antiserum by affinity-chromatography using epitope-specific immunogen.
Conjugation:	Unconjugated
Storage:	Store at -20°C as received.
Stability:	Stable for 12 months from date of receipt.
Gene Name:	StAR related lipid transfer domain containing 13
Database Link:	<a href="#">NP_821076</a> <a href="#">Entrez Gene 243362 Mouse</a> <a href="#">Entrez Gene 90627 Human</a> <a href="#">Q9Y3M8</a>
Synonyms:	DLC2; FLJ37385; GT650; RGD1564816; StAR-related lipid transfer (START) domain containing 13
Note:	STA13 antibody detects endogenous levels of total STA13 protein.

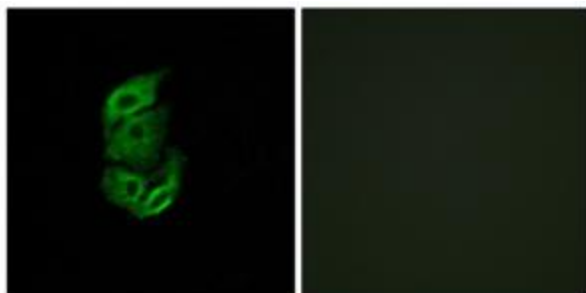


[View online »](#)

## Product images:



Western blot analysis of extracts from K562 cells, using STA13 antibody. The lane on the right is treated with the synthesized peptide.



Immunofluorescence analysis of A549 cells, using STA13 antibody. The picture on the right is treated with the synthesized peptide.