

Product datasheet for **TA315960**

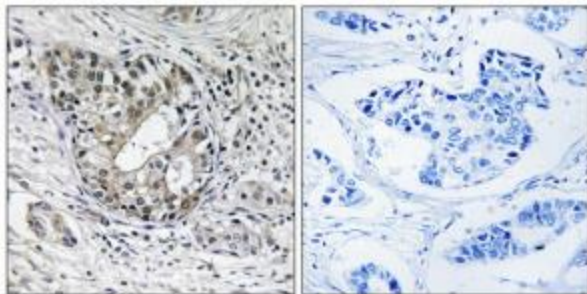
PNPT1 Rabbit Polyclonal Antibody

Product data:

Product Type:	Primary Antibodies
Applications:	IHC
Recommended Dilution:	IHC: 1:50~1:100, ELISA: 1:20000
Reactivity:	Human, Mouse
Host:	Rabbit
Isotype:	IgG
Clonality:	Polyclonal
Immunogen:	The antiserum was produced against synthesized peptide derived from internal of human PNPT1.
Formulation:	Phosphate buffered saline (without Mg ²⁺ and Ca ²⁺), pH 7.4, 150mM NaCl, 0.02% sodium azide and 50% glycerol.
Concentration:	lot specific
Purification:	The antibody was affinity-purified from rabbit antiserum by affinity-chromatography using epitope-specific immunogen.
Conjugation:	Unconjugated
Storage:	Store at -20°C as received.
Stability:	Stable for 12 months from date of receipt.
Gene Name:	polyribonucleotide nucleotidyltransferase 1
Database Link:	NP_149100 Entrez Gene 71701 Mouse Entrez Gene 87178 Human Q8TCS8
Synonyms:	COXPD13; DFNB70; old-35; OLD35; PNPASE
Note:	PNPT1 antibody detects endogenous levels of total PNPT1 protein
Protein Pathways:	Purine metabolism, Pyrimidine metabolism, RNA degradation



[View online »](#)

Product images:

Immunohistochemistry analysis of paraffin-embedded human breast carcinoma tissue using PNPT1 antibody. The picture on the right is treated with the synthesized peptide.