

Product datasheet for **TA315948**

ATG4D Rabbit Polyclonal Antibody

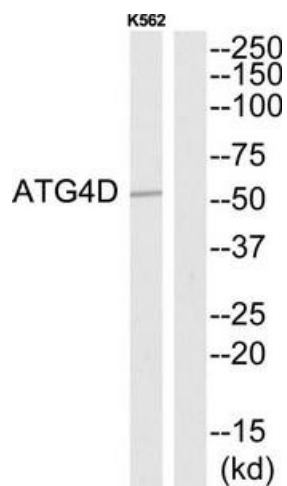
Product data:

Product Type:	Primary Antibodies
Applications:	WB
Recommended Dilution:	WB: 1:500~1:3000, ELISA: 1:1000
Reactivity:	Human
Host:	Rabbit
Isotype:	IgG
Clonality:	Polyclonal
Immunogen:	The antiserum was produced against synthesized peptide derived from N-terminal of human ATG4D.
Formulation:	Phosphate buffered saline (without Mg ²⁺ and Ca ²⁺), pH 7.4, 150mM NaCl, 0.02% sodium azide and 50% glycerol.
Concentration:	lot specific
Purification:	The antibody was affinity-purified from rabbit antiserum by affinity-chromatography using epitope-specific immunogen.
Conjugation:	Unconjugated
Storage:	Store at -20°C as received.
Stability:	Stable for 12 months from date of receipt.
Gene Name:	autophagy related 4D cysteine peptidase
Database Link:	NP_116274 Entrez Gene 84971 Human Q86TL0
Synonyms:	APG4-D; APG4D; AUTL4
Note:	ATG4D antibody detects endogenous levels of total ATG4Dprotein.
Protein Pathways:	Regulation of autophagy



[View online »](#)

Product images:



Western blot analysis of extracts from K562 cells, using ATG4D antibody. The lane on the right is treated with the synthesized peptide.