

Product datasheet for **TA315947**

TNFRSF19L (RELT) Rabbit Polyclonal Antibody

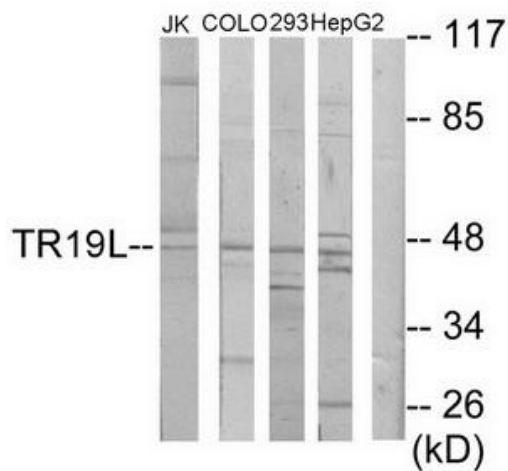
Product data:

Product Type:	Primary Antibodies
Applications:	WB
Recommended Dilution:	WB: 1:500~1:3000, ELISA: 1:40000
Reactivity:	Human, Mouse
Host:	Rabbit
Isotype:	IgG
Clonality:	Polyclonal
Immunogen:	The antiserum was produced against synthesized peptide derived from C-terminal of human TR19L.
Formulation:	Phosphate buffered saline (without Mg ²⁺ and Ca ²⁺), pH 7.4, 150mM NaCl, 0.02% sodium azide and 50% glycerol.
Concentration:	lot specific
Purification:	The antibody was affinity-purified from rabbit antiserum by affinity-chromatography using epitope-specific immunogen.
Conjugation:	Unconjugated
Storage:	Store at -20°C as received.
Stability:	Stable for 12 months from date of receipt.
Gene Name:	RELT tumor necrosis factor receptor
Database Link:	NP_116260 Entrez Gene 320100 Mouse Entrez Gene 84957 Human Q969Z4
Synonyms:	TNFRSF19L; TRLT
Note:	TR19L antibody detects endogenous levels of total TR19L protein.
Protein Families:	Druggable Genome, Transmembrane
Protein Pathways:	Cytokine-cytokine receptor interaction



[View online »](#)

Product images:



Western blot analysis of extracts from Jurkat cells, COLO205 cells, 293 cells and HepG2 cells, using TR19L antibody. The lane on the right is treated with the synthesized peptide.