

Product datasheet for **TA315945**

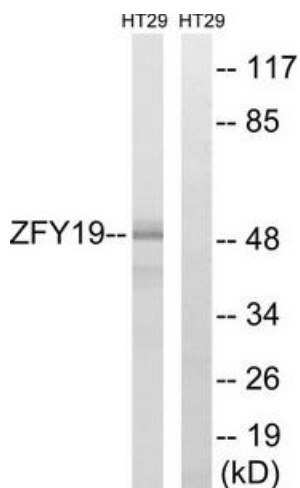
ZFYVE19 Rabbit Polyclonal Antibody

Product data:

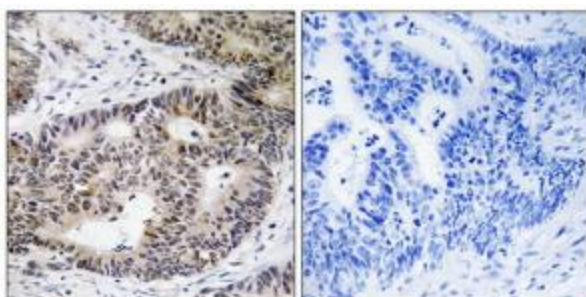
Product Type:	Primary Antibodies
Applications:	IHC, WB
Recommended Dilution:	WB: 1:500~1:3000, IHC: 1:50~1:100, ELISA: 1:40000
Reactivity:	Human
Host:	Rabbit
Isotype:	IgG
Clonality:	Polyclonal
Immunogen:	The antiserum was produced against synthesized peptide derived from internal of human ZFYVE19.
Formulation:	Phosphate buffered saline (without Mg ²⁺ and Ca ²⁺), pH 7.4, 150mM NaCl, 0.02% sodium azide and 50% glycerol.
Concentration:	lot specific
Purification:	The antibody was affinity-purified from rabbit antiserum by affinity-chromatography using epitope-specific immunogen.
Conjugation:	Unconjugated
Storage:	Store at -20°C as received.
Stability:	Stable for 12 months from date of receipt.
Gene Name:	zinc finger FYVE-type containing 19
Database Link:	NP_001070736 Entrez Gene 84936 Human Q96K21
Synonyms:	ANCHR; MPFYVE
Note:	ZFYVE19 antibody detects endogenous levels of total ZFYVE19 protein.



[View online »](#)

Product images:

Western blot analysis of extracts from HT-29 cells, using ZFYVE19 antibody. The lane on the right is treated with the synthesized peptide.



Immunohistochemistry analysis of paraffin-embedded human colon carcinoma tissue using ZFYVE19 antibody. The picture on the right is treated with the synthesized peptide.