

Product datasheet for **TA315936**

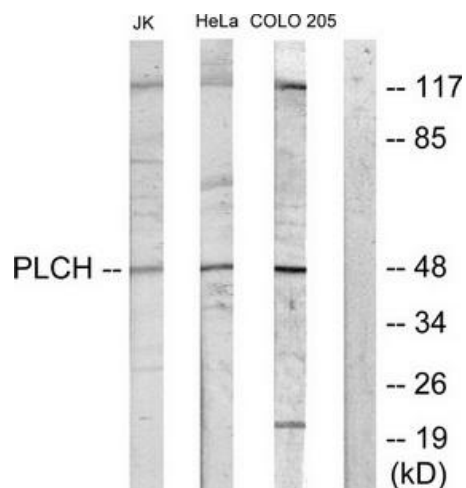
MAG1 (GPAT3) Rabbit Polyclonal Antibody

Product data:

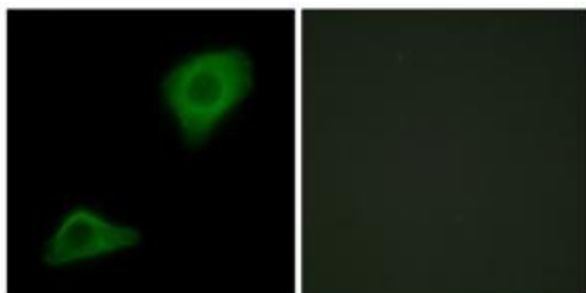
Product Type:	Primary Antibodies
Applications:	IF, WB
Recommended Dilution:	WB: 1:500~1:3000, IF: 1:100~1:500, ELISA: 1:1000
Reactivity:	Human, Mouse, Rat
Host:	Rabbit
Isotype:	IgG
Clonality:	Polyclonal
Immunogen:	The antiserum was produced against synthesized peptide derived from C-terminal of human PLCH.
Formulation:	Phosphate buffered saline (without Mg ²⁺ and Ca ²⁺), pH 7.4, 150mM NaCl, 0.02% sodium azide and 50% glycerol.
Concentration:	lot specific
Purification:	The antibody was affinity-purified from rabbit antiserum by affinity-chromatography using epitope-specific immunogen.
Conjugation:	Unconjugated
Storage:	Store at -20°C as received.
Stability:	Stable for 12 months from date of receipt.
Gene Name:	glycerol-3-phosphate acyltransferase 3
Database Link:	NP_116106 Entrez Gene 231510 MouseEntrez Gene 305166 RatEntrez Gene 84803 Human Q53EU6
Synonyms:	AGPAT8; AGPAT9; AGPAT 10; AGPAT10; HMFN0839; LPAAT-theta; MAG1
Note:	PLCH antibody detects endogenous levels of total PLCH protein.
Protein Families:	Transmembrane



[View online »](#)

Product images:


Western blot analysis of extracts from Jurkat cells, HeLa cells and COLO205 cells, using PLCH antibody. The lane on the right is treated with the synthesized peptide.



Immunofluorescence analysis of HepG2 cells, using PLCH antibody. The picture on the right is treated with the synthesized peptide.