

Product datasheet for **TA315934**

COX4 (COX4I2) Rabbit Polyclonal Antibody

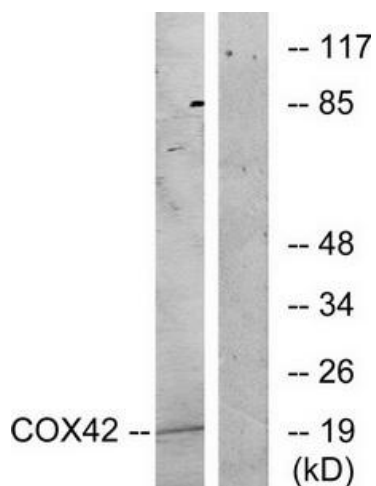
Product data:

Product Type:	Primary Antibodies
Applications:	IF, WB
Recommended Dilution:	WB: 1:500~1:3000, IF: 1:100~1:500, ELISA: 1:10000
Reactivity:	Human, Mouse, Rat
Host:	Rabbit
Isotype:	IgG
Clonality:	Polyclonal
Immunogen:	The antiserum was produced against synthesized peptide derived from internal of human COX42.
Formulation:	Phosphate buffered saline (without Mg ²⁺ and Ca ²⁺), pH 7.4, 150mM NaCl, 0.02% sodium azide and 50% glycerol.
Concentration:	lot specific
Purification:	The antibody was affinity-purified from rabbit antiserum by affinity-chromatography using epitope-specific immunogen.
Conjugation:	Unconjugated
Storage:	Store at -20°C as received.
Stability:	Stable for 12 months from date of receipt.
Gene Name:	cytochrome c oxidase subunit 4I2
Database Link:	NP_115998 Entrez Gene 84682 Mouse Entrez Gene 84683 Rat Entrez Gene 84701 Human Q96KJ9
Synonyms:	COX4; COX4-2; COX4B; COX4L2; COXIV-2; dj857M17.2
Note:	COX42 antibody detects endogenous levels of total COX42 protein.
Protein Families:	Transmembrane
Protein Pathways:	Alzheimer's disease, Cardiac muscle contraction, Huntington's disease, Metabolic pathways, Oxidative phosphorylation, Parkinson's disease

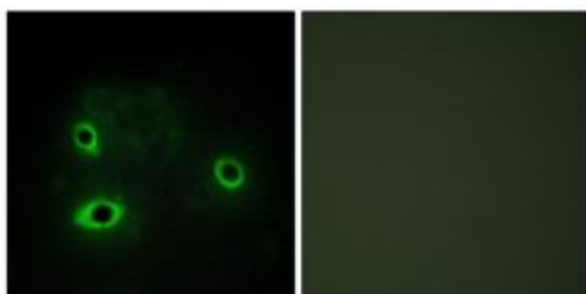


[View online »](#)

Product images:



Western blot analysis of extracts from K562 cells, treated with insulin (0.01U/ml, 15mins), using COX42 antibody. The lane on the right is treated with the synthesized peptide.



Immunofluorescence analysis of COS7 cells, using COX42 antibody. The picture on the right is treated with the synthesized peptide.