

Product datasheet for **TA315930**

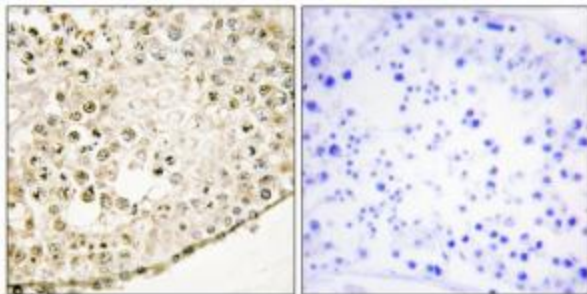
SPZ1 Rabbit Polyclonal Antibody

Product data:

Product Type:	Primary Antibodies
Applications:	IHC
Recommended Dilution:	IHC: 1:50~1:100, IF: 1:100~1:500, ELISA: 1:20000
Reactivity:	Human, Mouse, Rat
Host:	Rabbit
Isotype:	IgG
Clonality:	Polyclonal
Immunogen:	The antiserum was produced against synthesized peptide derived from internal of human SPZ1.
Formulation:	Phosphate buffered saline (without Mg ²⁺ and Ca ²⁺), pH 7.4, 150mM NaCl, 0.02% sodium azide and 50% glycerol.
Concentration:	lot specific
Purification:	The antibody was affinity-purified from rabbit antiserum by affinity-chromatography using epitope-specific immunogen.
Conjugation:	Unconjugated
Storage:	Store at -20°C as received.
Stability:	Stable for 12 months from date of receipt.
Gene Name:	spermatogenic leucine zipper 1
Database Link:	NP_115956 Entrez Gene 79401 MouseEntrez Gene 499510 RatEntrez Gene 84654 Human Q9BXG8
Synonyms:	NYD-TSP1; PPP1R148
Note:	Sha J.-H., Asian J. Androl. 5:83-88(2003).Ota T., Nat. Genet. 36:40-45(2004).Schmutz J., Nature 431:268-274(2004).



[View online »](#)

Product images:

Immunofluorescence analysis of A549 cells, using SPZ1 antibody. The picture on the right is treated with the synthesized peptide.