

## Product datasheet for **TA315929**

### GPR 174 (GPR174) Rabbit Polyclonal Antibody

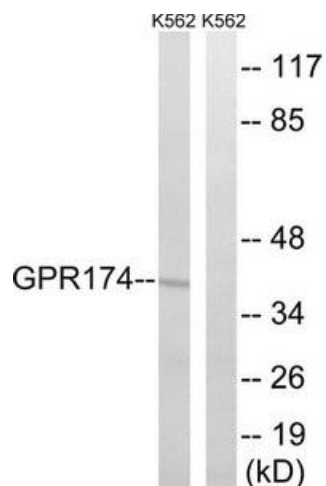
#### Product data:

Product Type:	Primary Antibodies
Applications:	IF, WB
Recommended Dilution:	WB: 1:500~1:3000, IF: 1:100~1:500, ELISA: 1:40000
Reactivity:	Human
Host:	Rabbit
Isotype:	IgG
Clonality:	Polyclonal
Immunogen:	The antiserum was produced against synthesized peptide derived from internal of human GPR174.
Formulation:	Phosphate buffered saline (without Mg <sup>2+</sup> and Ca <sup>2+</sup> ), pH 7.4, 150mM NaCl, 0.02% sodium azide and 50% glycerol.
Concentration:	lot specific
Purification:	The antibody was affinity-purified from rabbit antiserum by affinity-chromatography using epitope-specific immunogen.
Conjugation:	Unconjugated
Storage:	Store at -20°C as received.
Stability:	Stable for 12 months from date of receipt.
Gene Name:	G protein-coupled receptor 174
Database Link:	<a href="#">NP_115942</a> <a href="#">Entrez Gene 84636 Human</a> <a href="#">Q9BXC1</a>
Synonyms:	FKSG79; GPCR17; LYPSR3
Note:	GPR174 antibody detects endogenous levels of total GPR174 protein.
Protein Families:	Druggable Genome, GPCR, Transmembrane

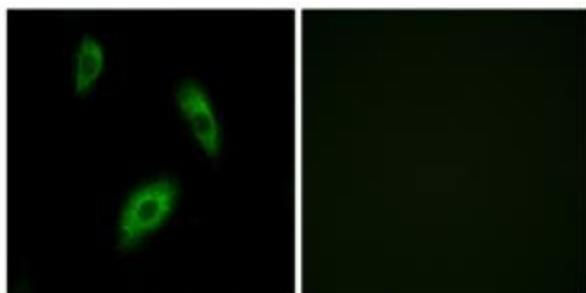


[View online »](#)

## Product images:



Western blot analysis of extracts from K562 cells, using GPR174 antibody. The lane on the right is treated with the synthesized peptide.



Immunofluorescence analysis of LOVO cells, using GPR174 antibody. The picture on the right is treated with the synthesized peptide.