

## Product datasheet for **TA315927**

### KISS1 receptor (KISS1R) Rabbit Polyclonal Antibody

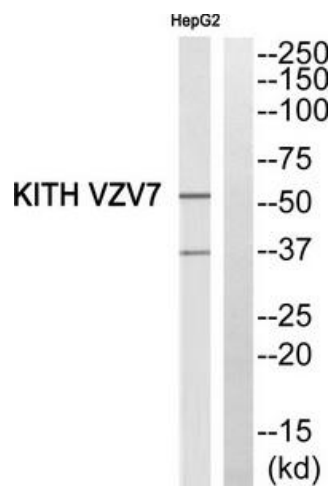
#### Product data:

Product Type:	Primary Antibodies
Applications:	WB
Recommended Dilution:	WB: 1:500~1:3000, ELISA: 1:10000
Reactivity:	Human
Host:	Rabbit
Isotype:	IgG
Clonality:	Polyclonal
Immunogen:	The antiserum was produced against synthesized peptide derived from Internal of human KITH_VZV7.
Formulation:	Phosphate buffered saline (without Mg <sup>2+</sup> and Ca <sup>2+</sup> ), pH 7.4, 150mM NaCl, 0.02% sodium azide and 50% glycerol.
Concentration:	lot specific
Purification:	The antibody was affinity-purified from rabbit antiserum by affinity-chromatography using epitope-specific immunogen.
Conjugation:	Unconjugated
Storage:	Store at -20°C as received.
Stability:	Stable for 12 months from date of receipt.
Gene Name:	KISS1 receptor
Database Link:	<a href="#">NP_115940</a> <a href="#">Entrez Gene 84634 Human</a> <a href="#">Q969F8</a>
Synonyms:	AXOR12; CPPB1; GPR54; HH8; HOT7T175; KISS-1R
Note:	KITH_VZV7 Antibody detects endogenous levels of total KITH_VZV7 protein
Protein Families:	Druggable Genome, GPCR, Transmembrane
Protein Pathways:	Neuroactive ligand-receptor interaction



[View online »](#)

## Product images:



Western blot analysis of extracts from HepG2 cells, using KITH\_VZV7 Antibody. The lane on the right is treated with the synthesized peptide.