

## Product datasheet for **TA315925**

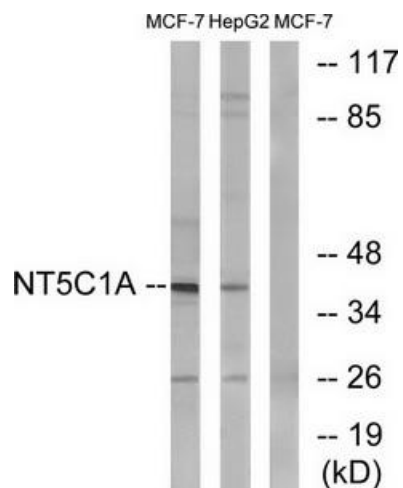
### NT5C1A Rabbit Polyclonal Antibody

#### Product data:

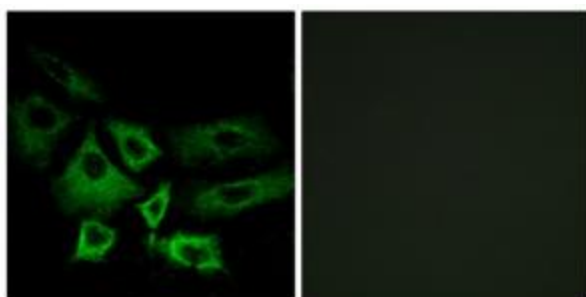
Product Type:	Primary Antibodies
Applications:	IF, WB
Recommended Dilution:	WB: 1:500~1:3000, IF: 1:100~1:500, ELISA: 1:20000
Reactivity:	Human, Mouse
Host:	Rabbit
Isotype:	IgG
Clonality:	Polyclonal
Immunogen:	The antiserum was produced against synthesized peptide derived from internal of human NT5C1A.
Formulation:	Phosphate buffered saline (without Mg <sup>2+</sup> and Ca <sup>2+</sup> ), pH 7.4, 150mM NaCl, 0.02% sodium azide and 50% glycerol.
Concentration:	lot specific
Purification:	The antibody was affinity-purified from rabbit antiserum by affinity-chromatography using epitope-specific immunogen.
Conjugation:	Unconjugated
Storage:	Store at -20°C as received.
Stability:	Stable for 12 months from date of receipt.
Gene Name:	5'-nucleotidase, cytosolic IA
Database Link:	<a href="#">NP_115915</a> <a href="#">Entrez Gene 230718 Mouse</a> <a href="#">Entrez Gene 84618 Human</a> <a href="#">Q9BXI3</a>
Synonyms:	CN-I; CN-IA; CN1; CN1A; CN1
Note:	NT5C1A antibody detects endogenous levels of total NT5C1A protein.
Protein Pathways:	Metabolic pathways, Nicotinate and nicotinamide metabolism, Purine metabolism, Pyrimidine metabolism



[View online »](#)

**Product images:**


Western blot analysis of extracts from MCF-7 cells and HepG2 cells, using NT5C1A antibody. The lane on the right is treated with the synthesized peptide.



Immunofluorescence analysis of A549 cells, using NT5C1A antibody. The picture on the right is treated with the synthesized peptide.