

Product datasheet for **TA315918**

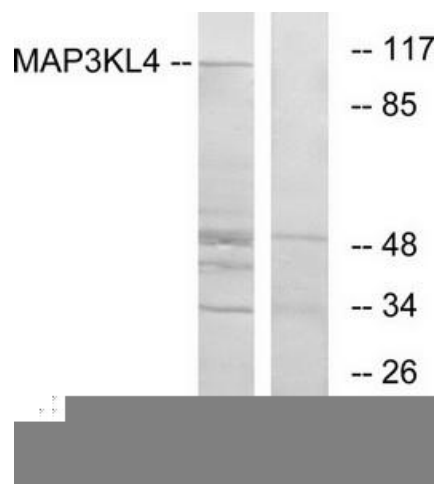
MLK4 (MAP3K21) Rabbit Polyclonal Antibody

Product data:

Product Type:	Primary Antibodies
Applications:	WB
Recommended Dilution:	WB: 1:500~1:3000, ELISA: 1:20000
Reactivity:	Human
Host:	Rabbit
Isotype:	IgG
Clonality:	Polyclonal
Immunogen:	The antiserum was produced against synthesized peptide derived from internal of human MAP3KL4.
Formulation:	Phosphate buffered saline (without Mg ²⁺ and Ca ²⁺), pH 7.4, 150mM NaCl, 0.02% sodium azide and 50% glycerol.
Concentration:	lot specific
Purification:	The antibody was affinity-purified from rabbit antiserum by affinity-chromatography using epitope-specific immunogen.
Conjugation:	Unconjugated
Storage:	Store at -20°C as received.
Stability:	Stable for 12 months from date of receipt.
Gene Name:	mitogen-activated protein kinase kinase kinase 21
Database Link:	NP_115811 Entrez Gene 84451 Human Q5TCX8
Synonyms:	dJ862P8.3; MLK4
Note:	MAP3KL4 antibody detects endogenous levels of total MAP3KL4 protein.
Protein Families:	Druggable Genome, Protein Kinase

[View online »](#)

Product images:



Western blot analysis of extracts from HT-29 cells, using MAP3KL4 antibody. The lane on the right is treated with the synthesized peptide.