

Product datasheet for **TA315916**

RAB11FIP4 Rabbit Polyclonal Antibody

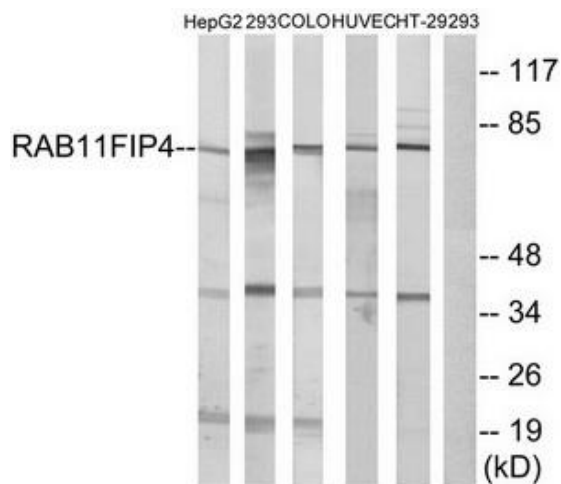
Product data:

Product Type:	Primary Antibodies
Applications:	WB
Recommended Dilution:	WB: 1:500~1:3000, ELISA: 1:40000
Reactivity:	Human, Mouse
Host:	Rabbit
Isotype:	IgG
Clonality:	Polyclonal
Immunogen:	The antiserum was produced against synthesized peptide derived from internal of human RAB11FIP4.
Formulation:	Phosphate buffered saline (without Mg ²⁺ and Ca ²⁺), pH 7.4, 150mM NaCl, 0.02% sodium azide and 50% glycerol.
Concentration:	lot specific
Purification:	The antibody was affinity-purified from rabbit antiserum by affinity-chromatography using epitope-specific immunogen.
Conjugation:	Unconjugated
Storage:	Store at -20°C as received.
Stability:	Stable for 12 months from date of receipt.
Gene Name:	RAB11 family interacting protein 4
Database Link:	NP_116321 Entrez Gene 268451 Mouse Entrez Gene 84440 Human Q86YS3
Synonyms:	RAB11-FIP4
Note:	RAB11FIP4 antibody detects endogenous levels of total RAB11FIP4 protein.
Protein Pathways:	Endocytosis



[View online »](#)

Product images:



Western blot analysis of extracts from HepG2 cells, 293 cells, COLO cells, HUVEC cells and HT-29 cells, using RAB11FIP4 antibody. The lane on the right is treated with the synthesized peptide.