

Product datasheet for **TA315911**

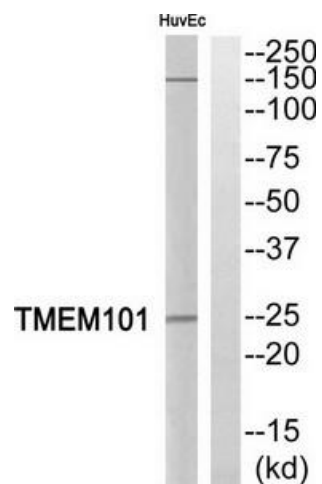
Transmembrane Protein 101 (TMEM101) Rabbit Polyclonal Antibody

Product data:

Product Type:	Primary Antibodies
Applications:	WB
Recommended Dilution:	WB: 1:500~1:3000, ELISA: 1:10000
Reactivity:	Human, Mouse
Host:	Rabbit
Isotype:	IgG
Clonality:	Polyclonal
Immunogen:	The antiserum was produced against synthesized peptide derived from internal of human TMEM101.
Formulation:	Phosphate buffered saline (without Mg ²⁺ and Ca ²⁺), pH 7.4, 150mM NaCl, 0.02% sodium azide and 50% glycerol.
Concentration:	lot specific
Purification:	The antibody was affinity-purified from rabbit antiserum by affinity-chromatography using epitope-specific immunogen.
Conjugation:	Unconjugated
Storage:	Store at -20°C as received.
Stability:	Stable for 12 months from date of receipt.
Gene Name:	transmembrane protein 101
Database Link:	NP_115752 Entrez Gene 76547 Mouse Entrez Gene 84336 Human Q96IK0
Synonyms:	FLJ23987; MGC4251
Note:	TMEM101 antibody detects endogenous levels of total TMEM101 protein.
Protein Families:	Transmembrane

[View online »](#)

Product images:



Western blot analysis of extracts from HuvEc cells, using TMEM101 antibody. The lane on the right is treated with the synthesized peptide.