

## Product datasheet for **TA315904**

### ZNF541 Rabbit Polyclonal Antibody

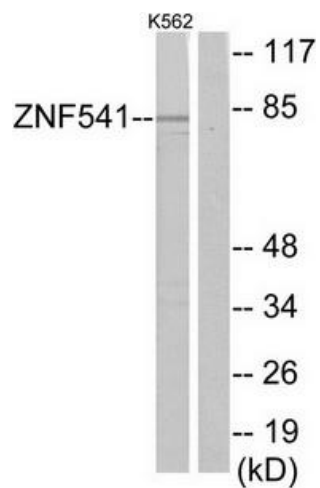
#### Product data:

Product Type:	Primary Antibodies
Applications:	WB
Recommended Dilution:	WB: 1:500~1:3000, ELISA: 1:20000
Reactivity:	Human
Host:	Rabbit
Isotype:	IgG
Clonality:	Polyclonal
Immunogen:	The antiserum was produced against synthesized peptide derived from internal of human ZNF541.
Formulation:	Phosphate buffered saline (without Mg <sup>2+</sup> and Ca <sup>2+</sup> ), pH 7.4, 150mM NaCl, 0.02% sodium azide and 50% glycerol.
Concentration:	lot specific
Purification:	The antibody was affinity-purified from rabbit antiserum by affinity-chromatography using epitope-specific immunogen.
Conjugation:	Unconjugated
Storage:	Store at -20°C as received.
Stability:	Stable for 12 months from date of receipt.
Gene Name:	zinc finger protein 541
Database Link:	<a href="#">NP_001094889</a> <a href="#">Entrez Gene 84215 Human</a> <a href="#">Q9H0D2</a>
Synonyms:	DKFZp434i1930; MGC119518; MGC119519; MGC119521
Note:	ZNF541 antibody detects endogenous levels of total ZNF541 protein.



[View online »](#)

## Product images:



Western blot analysis of extracts from K562 cells, using ZNF541 antibody. The lane on the right is treated with the synthesized peptide.