

Product datasheet for **TA315900**

POLR1B Rabbit Polyclonal Antibody

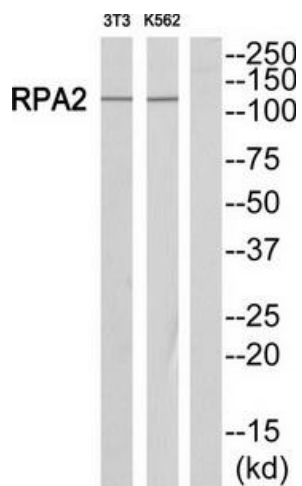
Product data:

Product Type:	Primary Antibodies
Applications:	WB
Recommended Dilution:	WB: 1:500~1:3000, ELISA: 1:40000
Reactivity:	Human, Mouse, Rat
Host:	Rabbit
Isotype:	IgG
Clonality:	Polyclonal
Immunogen:	The antiserum was produced against synthesized peptide derived from C-terminal of human POLR1B.
Formulation:	Phosphate buffered saline (without Mg ²⁺ and Ca ²⁺), pH 7.4, 150mM NaCl, 0.02% sodium azide and 50% glycerol.
Concentration:	lot specific
Purification:	The antibody was affinity-purified from rabbit antiserum by affinity-chromatography using epitope-specific immunogen.
Conjugation:	Unconjugated
Storage:	Store at -20°C as received.
Stability:	Stable for 12 months from date of receipt.
Gene Name:	polymerase (RNA) I subunit B
Database Link:	NP_001131076 Entrez Gene 20017 Mouse Entrez Gene 83582 Rat Entrez Gene 84172 Human Q9H9Y6
Synonyms:	RPA2; RPA135; Rpo1-2
Note:	POLR1B antibody detects endogenous levels of total POLR1B protein.
Protein Families:	Transcription Factors
Protein Pathways:	Metabolic pathways, Purine metabolism, Pyrimidine metabolism, RNA polymerase



[View online »](#)

Product images:



Western blot analysis of extracts from Jurkat/NIH-3T3 cells, using POLR1B antibody. The lane on the right is treated with the synthesized peptide.