

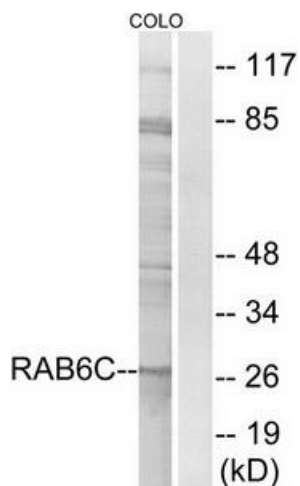
Product datasheet for **TA315893**

RAB6C Rabbit Polyclonal Antibody

Product data:

Product Type:	Primary Antibodies
Applications:	WB
Recommended Dilution:	WB: 1:500~1:3000, ELISA: 1:40000
Reactivity:	Human, Mouse, Rat
Host:	Rabbit
Isotype:	IgG
Clonality:	Polyclonal
Immunogen:	The antiserum was produced against synthesized peptide derived from internal of human RAB6C.
Formulation:	Phosphate buffered saline (without Mg ²⁺ and Ca ²⁺), pH 7.4, 150mM NaCl, 0.02% sodium azide and 50% glycerol.
Concentration:	lot specific
Purification:	The antibody was affinity-purified from rabbit antiserum by affinity-chromatography using epitope-specific immunogen.
Conjugation:	Unconjugated
Storage:	Store at -20°C as received.
Stability:	Stable for 12 months from date of receipt.
Gene Name:	RAB6C, member RAS oncogene family
Database Link:	NP_115520 Entrez Gene 84084 Human Q9H0N0
Synonyms:	WTH3
Note:	RAB6C antibody detects endogenous levels of total RAB6C protein.
Protein Families:	Druggable Genome

[View online »](#)

Product images:

Western blot analysis of extracts from COLO cells, using RAB6C antibody. The lane on the right is treated with the synthesized peptide.