

## Product datasheet for **TA315890**

### Sodium bicarbonate transporter like protein 11 (SLC4A11) Rabbit Polyclonal Antibody

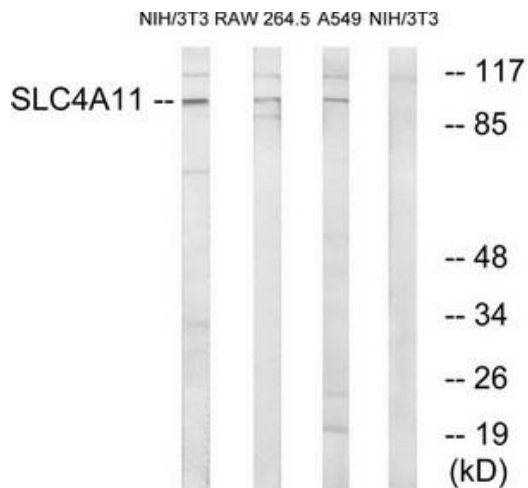
#### Product data:

Product Type:	Primary Antibodies
Applications:	WB
Recommended Dilution:	WB: 1:500~1:3000, ELISA: 1:20000
Reactivity:	Human
Host:	Rabbit
Isotype:	IgG
Clonality:	Polyclonal
Immunogen:	The antiserum was produced against synthesized peptide derived from internal of human SLC4A11.
Formulation:	Phosphate buffered saline (without Mg <sup>2+</sup> and Ca <sup>2+</sup> ), pH 7.4, 150mM NaCl, 0.02% sodium azide and 50% glycerol.
Concentration:	lot specific
Purification:	The antibody was affinity-purified from rabbit antiserum by affinity-chromatography using epitope-specific immunogen.
Conjugation:	Unconjugated
Storage:	Store at -20°C as received.
Stability:	Stable for 12 months from date of receipt.
Gene Name:	solute carrier family 4 member 11
Database Link:	<a href="#">NP_001167560</a> <a href="#">Entrez Gene 83959 Human</a> <a href="#">Q8NBS3</a>
Synonyms:	BTR1; CDPD1; CHED2; dj794I6.2; NABC1
Note:	SLC4A11 antibody detects endogenous levels of total SLC4A11 protein.
Protein Families:	Transmembrane



[View online »](#)

Product images:



Western blot analysis of extracts from 3T3 cells, RAW264.7 cells and A549 cells, using SLC4A11 antibody. The lane on the right is treated with the synthesized peptide.